

MarkVision Professional 10.1
Data Export

September 2, 2003
Lexmark International, Inc.
740 New Circle Road
Lexington, KY 40550

Abstract

This document focuses on the technical issues surrounding MarkVision Professional (MVP)'s database support. The intent of this document is to cover the structure of the data and provide details concerning the content.

Edition: December 2002

The following paragraph does not apply to any country where such provisions are inconsistent with local law: LEXMARK INTERNATIONAL, INC., PROVIDES THIS PUBLICATION "AS IS" WITHOUT WARRANTY OF ANY KIND, EITHER EXPRESS OR IMPLIED, INCLUDING, BUT NOT LIMITED TO, THE IMPLIED WARRANTIES OF MERCHANTABILITY OR FITNESS FOR A PARTICULAR PURPOSE. Some states do not allow disclaimer of express or implied warranties in certain transactions; therefore, this statement may not apply to you.

This publication could include technical inaccuracies or typographical errors. Changes are periodically made to the information herein; these changes will be incorporated in later editions. Improvements or changes in the products or the programs described may be made at any time.

Comments about this publication may be addressed to Lexmark International, Inc., Department F95/032-2, 740 West New Circle Road, Lexington, Kentucky 40550, U.S.A. In the United Kingdom and Eire, send to Lexmark International Ltd., Marketing and Services Department, Westhorpe House, Westhorpe, Marlow Bucks SL7 3RQ. Lexmark may use or distribute any of the information you supply in any way it believes appropriate without incurring any obligation to you. You can purchase additional copies of publications related to this product by calling 1-800-553-9727. In the United Kingdom and Eire, call +44 (0)8704 440 044. In other countries, contact your point of purchase.

References in this publication to products, programs, or services do not imply that the manufacturer intends to make these available in all countries in which it operates. Any reference to a product, program, or service is not intended to state or imply that only that product, program, or service may be used. Any functionally equivalent product, program, or service that does not infringe any existing intellectual property right may be used instead. Evaluation and verification of operation in conjunction with other products, programs, or services, except those expressly designated by the manufacturer, are the user's responsibility.

© Copyright 2002 Lexmark International, Inc.

All rights reserved.

UNITED STATES GOVERNMENT RESTRICTED RIGHTS

This software and documentation are provided with RESTRICTED RIGHTS. Use, duplication or disclosure by the Government is subject to restrictions as set forth in subparagraph (c)(1)(ii) of the Rights in Technical Data and Computer Software clause at DFARS 252.227-7013 and in applicable FAR provisions: Lexmark International, Inc., Lexington, KY 40550.

Trademarks

Lexmark and Lexmark with diamond design, MarkVision, and Optra, are trademarks of Lexmark International, Inc., registered in the United States and/or other countries.

Other trademarks are the property of their respective owners.

MarkVision Professional 10.1

| | |
|----------------------------------------------|----|
| Abstract..... | 2 |
| Edition: December 2002..... | 2 |
| Trademarks..... | 2 |
| 1. Overview..... | 5 |
| 2. Configuring Database Driver..... | 5 |
| 2.1 Supported Databases..... | 5 |
| 2.1.1 Windows..... | 5 |
| 2.1.2 UNIX..... | 5 |
| 2.2 Creating Windows System DSN..... | 5 |
| 2.2.1 Microsoft Access..... | 6 |
| 2.2.2 SQL Server..... | 9 |
| 2.3 Oracle..... | 10 |
| 2.4 CSV..... | 10 |
| 3. Printer Inventory..... | 10 |
| 3.1 Configuring MarkVision Professional..... | 12 |
| 3.2 Table and Field Descriptions..... | 13 |
| 3.2.1 RAWPRNINV..... | 14 |
| 3.2.2 RAWPIEMULATOR..... | 17 |
| 3.2.3 RAWPIPHYSICALPORT..... | 18 |
| 3.2.4 RAWPIINTERPRETER..... | 18 |
| 3.2.5 RAWPISUPPLY..... | 20 |
| 3.2.6 RAWPIFONTOPTION..... | 21 |
| 3.2.7 RAWPICODELEVEL..... | 22 |
| 3.2.8 RAWPIOPTION..... | 22 |
| 3.2.9 RAWPIINPUTOPTION..... | 23 |
| 3.2.10 RAWPIINPUT..... | 24 |
| 3.2.11 RAWPIOUTPUTOPTION..... | 24 |
| 3.2.12 RAWPIOUTPUT..... | 25 |
| 3.2.13 RAWPIDEVICESTATUS..... | 27 |
| 3.2.14 RAWPISTATSJOB..... | 27 |
| 3.2.15 RAWPISTATSPAPER..... | 28 |
| 3.2.16 RAWPISTATSSIDES..... | 30 |
| 3.2.17 RAWPISTATSSUPPLIES..... | 31 |
| 3.2.18 RAWPISTATSINSTALL..... | 33 |
| 3.3 Field Relationships..... | 34 |
| 4. Job Statistics..... | 35 |
| 4.1 Configuring MarkVision Professional..... | 35 |
| 4.1.1 Job Statistics (Trend Analysis)..... | 35 |
| 4.1.2 Job Statistics: Collect From Disk..... | 37 |
| 4.2 Table and Field Descriptions..... | 40 |
| 4.2.1 RAWJAFAXJOB..... | 41 |
| 4.2.2 RAWJASCANJOB..... | 43 |
| 4.2.3 RAWJAPRINTJOB..... | 44 |
| 4.2.4 RAWJAPRINTJOBINPUT..... | 49 |
| 4.2.5 RAWJAPRINTJOBSUPPLY..... | 49 |
| 4.2.6 RAWJAPRINTJOBPAPER..... | 50 |
| 4.3 Field Relationships..... | 51 |
| 5. Device Status..... | 52 |
| 5.1 Configuring MarkVision Professional..... | 52 |
| 5.2 Table and Field Descriptions..... | 52 |
| 5.2.1 RAWDEVICESTATUS..... | 52 |
| 5.2.2 RAWDSDEVICESTATUS..... | 53 |
| 5.3 Field Relationships..... | 54 |

6. Data Type Conversion 54

1. Overview

MarkVision Professional allows you to collect comprehensive data on the physical devices (Printer Inventory) and on submitted jobs to the devices (Job Statistics). The MarkVision Professional database consists of a number tables, each prefixed with the word RAW. The next prefix determines the table's function:

| | |
|--------------|---------------------------|
| JA | Job Statistics |
| PI | Printer Inventory |
| DS | Device Status |
| DeviceStatus | Device Status |
| PRN | Master Printer data table |
| Device | Master Device data table |

2. Configuring Database Driver

2.1 Supported Databases

2.1.1 Windows

- Oracle (8.0.3)
- SQL Server (6.5, 7.0, 2000)
- Microsoft Access (97, 2000, 2002)
- Comma-separated variable (CSV)

NOTE: The 'Oracle' database option is only available after installing the Oracle JDBC Driver plug-in.

2.1.2 UNIX

- Oracle (8.0.3)
- Comma-separated variable (CSV)

NOTE: The 'Oracle' database option is only available after installing the Oracle JDBC Driver plug-in.

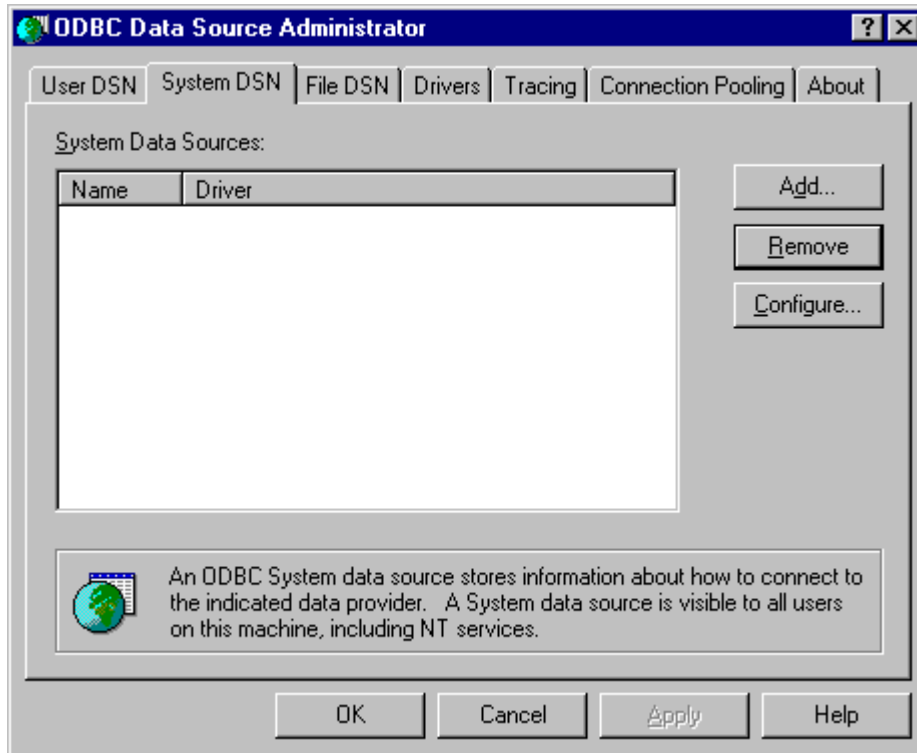
2.2 Creating Windows System DSN

Before you can enable MarkVision Professional to collect printer inventory or Job Statistics information on windows systems, you must first configure the ODBC data source. The system ODBC settings can be accessed from the system control panel.

Example 1: *Start*→*Settings*→*Control Panel* →*Data Sources (ODBC)* for Windows NT 4.0

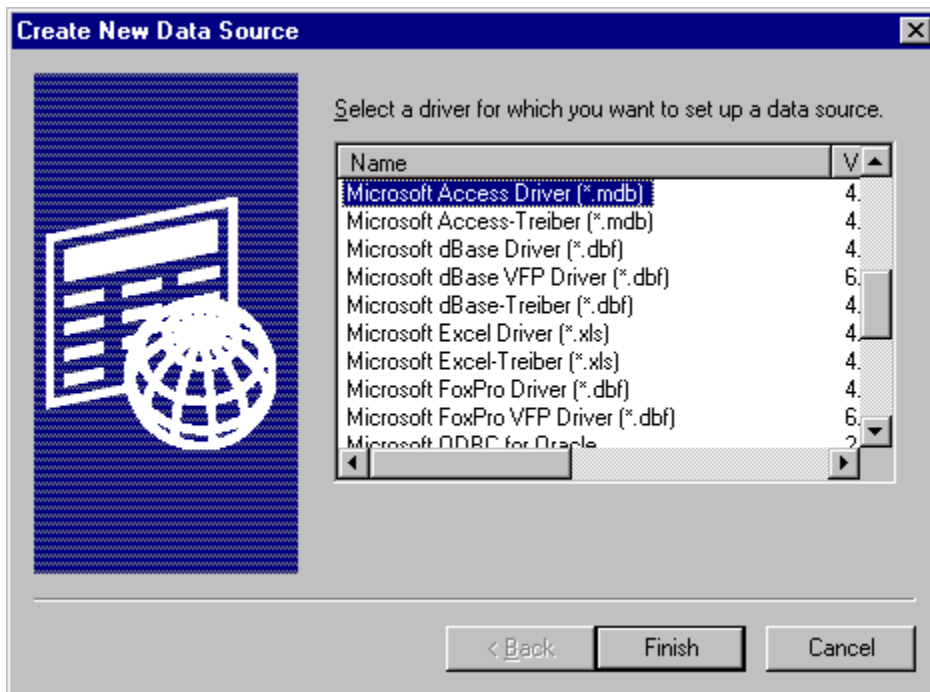
Example 2: *Start*→*Settings*→*Control Panel* →*Administrative Tools*→*Data Sources (ODBC)* for Windows 2000 and beyond

Once in the ODBC settings dialog box, click on the System DSN tab. The following box should appear.



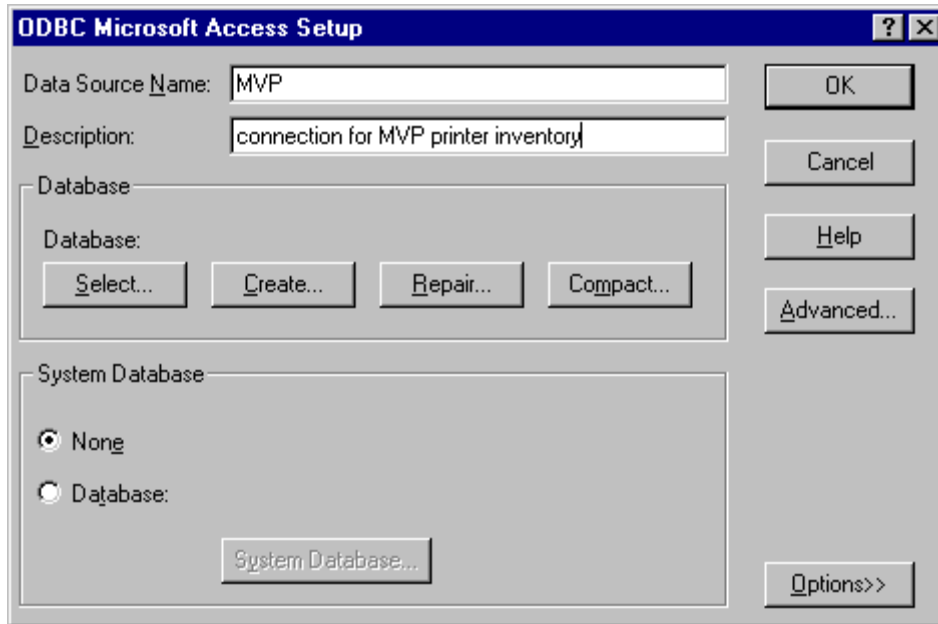
2.2.1 Microsoft Access

From the System DSN dialog box, click "Add" and the following dialog box will appear. Select Microsoft Access Driver (*.mdb) and click "Finish."

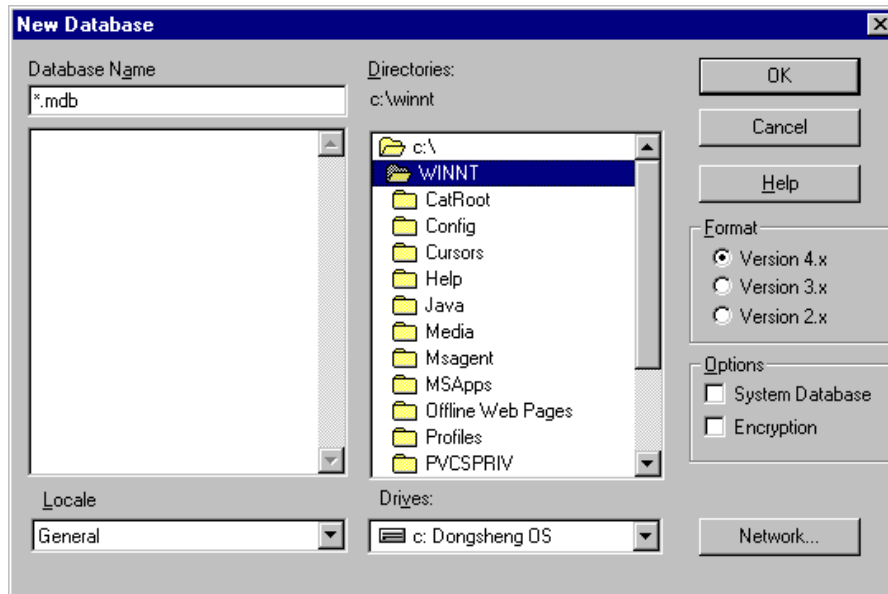


After clicking "Finish", the following dialog box will appear. Think of a name for your connection and type it into the "Data Source Name" (DSN) field, and then type a description for the data

source. For the example, MVP has been chosen for the name, and the description is “connection for MVP printer inventory”.

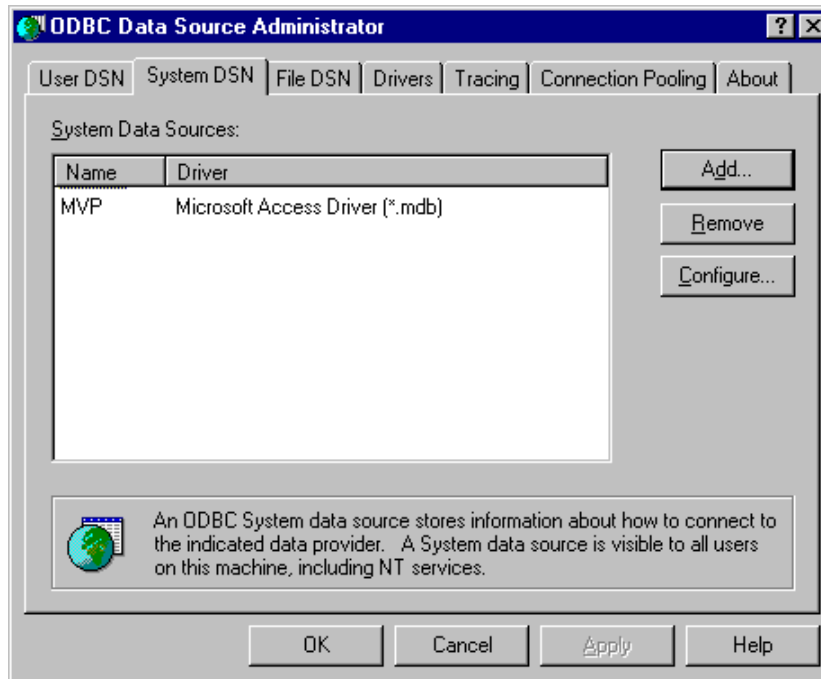


After the name and description for the connection has been entered, you must specify a database in which to store the data coming from MarkVision Professional. You may either “Select” a database already created for this purpose, or choose “Create” to define a new database and location. Click on “Create” and the following dialog box will appear.



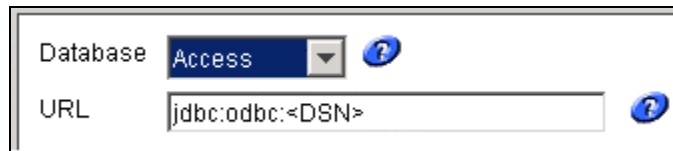
Browse to the desired directory, and specify a name to be used for your database. Make a note of the name and location; you may need this information to configure MarkVision Professional or to design reports in MS Access later. **NOTE: “Format” depends upon which version of Access you will be using to view the database. Version 4.x is for Access 2000 and higher, Version 3.x is for Access 97 and 95.** Click “OK” and a confirmation dialog box should appear.

Click “OK” for the confirmation, and then “OK” again on the ODBC Microsoft Access Setup dialog box to return to the ODBC Data Source Administrator.



The name you specified for your connection (DSN) is now listed under System DSN. Click “OK”. You are now ready to configure MarkVision Professional to start sending the data.

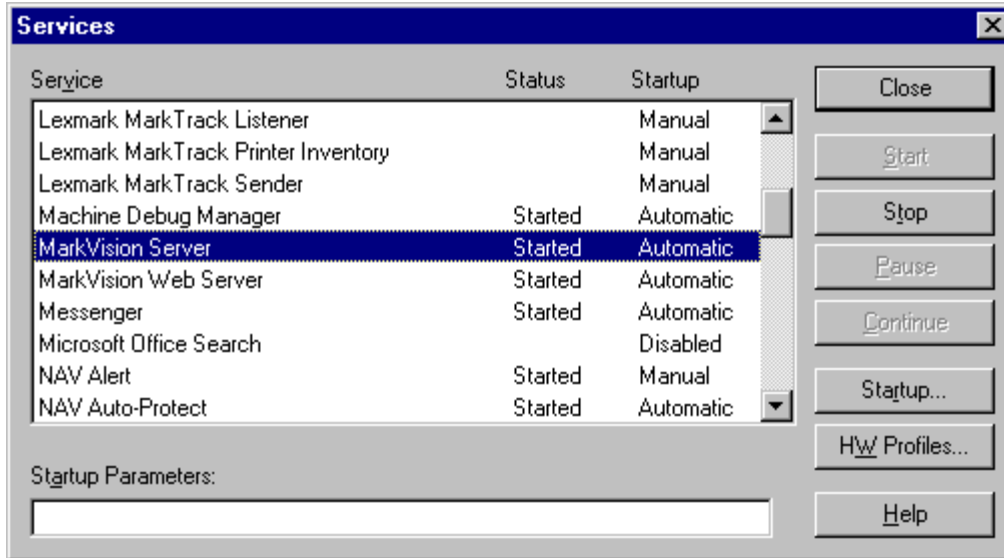
In MarkVision Professional, after selecting the “Access” database selection, the URL field should become enabled.



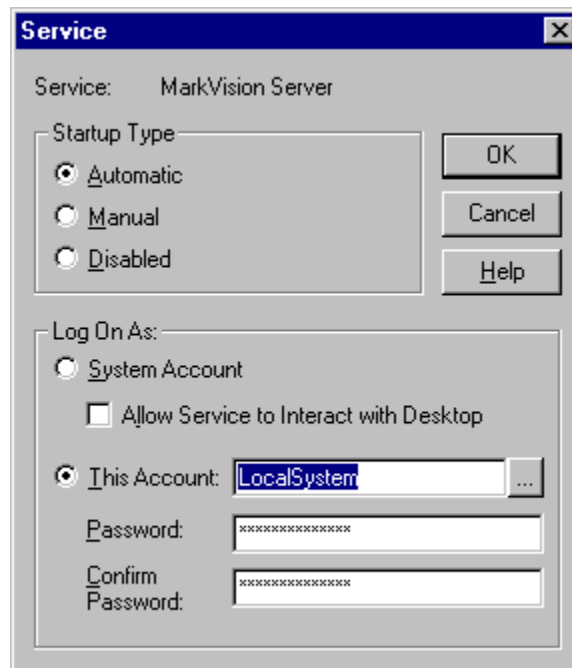
In the URL field, type the name of the System DSN you created earlier. It is not necessary to specify the path to the actual database file; this was defined while creating the connection. For the example just described, enter **jdbc:odbc:MVP**. If you have enabled security features while creating the database, enter the user name and password and click on “OK.”

2.2.1.1 Locating an Access Database on a Different Server

It is possible to store an Access database on a different server than the machine on which the MarkVision server resides. By default, the MarkVision server service accesses network resources using the Administrator account. You may have to alter the account used to enable the appropriate network access. To enable the MarkVision server to access the alternate location, some changes must be made to the MarkVision Server service. On the services dialog box, select the MarkVision Server service.



Access the properties of the service by either double-clicking the service in Windows NT, or clicking the properties button in Windows 2000 and beyond.



Select "This Account" to log on to the new machine as a user with appropriate network access privileges and click "OK."

2.2.2 SQL Server

The method for creating a DSN under Windows for Microsoft's SQL Server is nearly identical to Access. Simply substitute "SQL Server" for the system DSN. See [Microsoft Access](#) for more information.

2.3 Oracle

MarkVision Server's install package no longer contains an Oracle JDBC driver by default. As a result of modified licensing agreements, Lexmark is no longer able to directly distribute Oracle JDBC (database) support. If out-of-date drivers existed on your system from a previous release of MarkVision Professional, they have been removed. If you require Oracle support, you will need to register and download the **Oracle JDBC Driver v1.0.mvp** plug-in from the following web page: <http://www.markvisionprofessional.com>.

After downloading and installing in the appropriate plug-in, the "Oracle" database selection will become available. In MarkVision Professional, after selecting the "Oracle" database selection, the URL field should become enabled.

The screenshot shows a configuration window with two fields. The first field is labeled "Database" and has a dropdown menu with "Oracle" selected. To the right of the dropdown is a blue question mark icon. The second field is labeled "URL" and contains the text "jdbc:oracle:thin:@localhost:1521:orcl". To the right of the text input is another blue question mark icon.

In the URL field, change the "localhost" value to the hostname or IP address of the machine running your Oracle database. The URL must use the following format:

<database driver>@<database server's IP address>:<database port>:<database instance (memory area)>

For example: **jdbc:oracle:thin:@157.184.46.113:1521:orcl**. If you have enabled security features while creating the database, enter the user name and password and click on "OK."

2.4 CSV

Users may elect to export database information to a CSV format. In MarkVision Professional, after selecting the "CSV" database selection, the 'Directory' field should become enabled.

The screenshot shows a configuration window with two fields. The first field is labeled "Database" and has a dropdown menu with "CSV" selected. To the right of the dropdown is a blue question mark icon. The second field is labeled "Directory" and is an empty text input box. To the right of the text input is another blue question mark icon.

Due to the multi-dimensional aspect of the data being collected, multiple CSV files are generated. Each file represents a table and the primary/foreign key relationship, as described below, is how information in these files should be correlated.

Database insertions (including CSV file manipulation) are handled by a separate thread to reduce I/O impact of such insertions on the rest of the system. This thread, by default, has a 2 minute time-out, so database insertions and CSV file manipulation will not occur immediately after task completion. In other words, the printer inventory task may say complete, but the CSV files will not be modified until the database insertion timeout is breached. Modify the **queueWriter.pollingRate** parameter to change the default behavior of this thread.

3. Printer Inventory

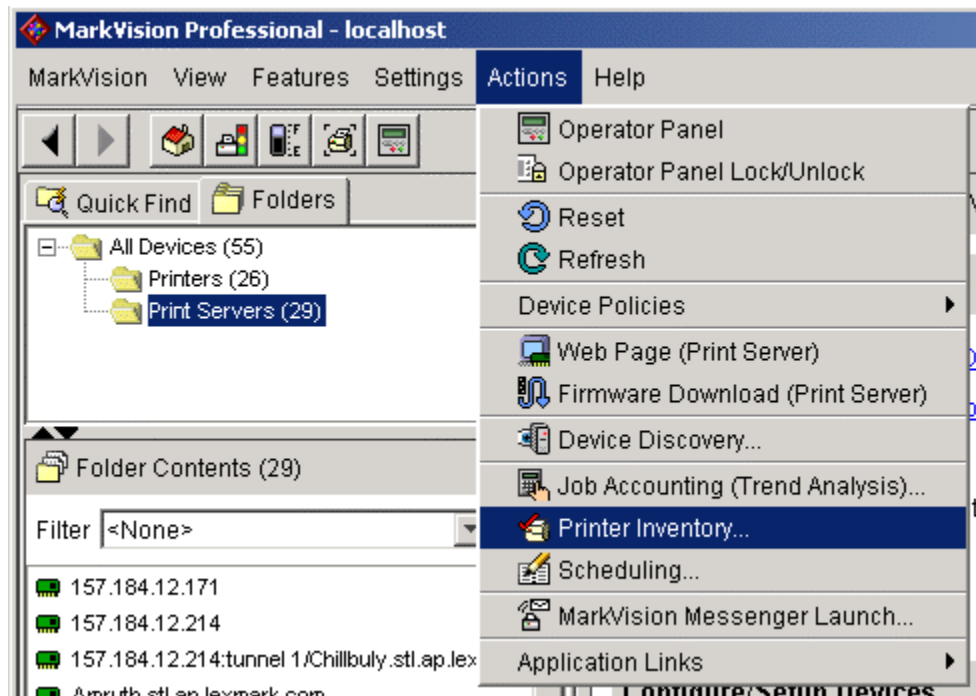
You can use the MarkVision Server to gather and store information about the devices in your organization. You can then view the collected information (*printer inventory*) using a database tool or an application, such as MarkTrack, specifically designed to interpret and display the information. See [Configuring Database Driver](#) for a description of supported databases.

Use the information gathered by the printer inventory process to answer questions such as:

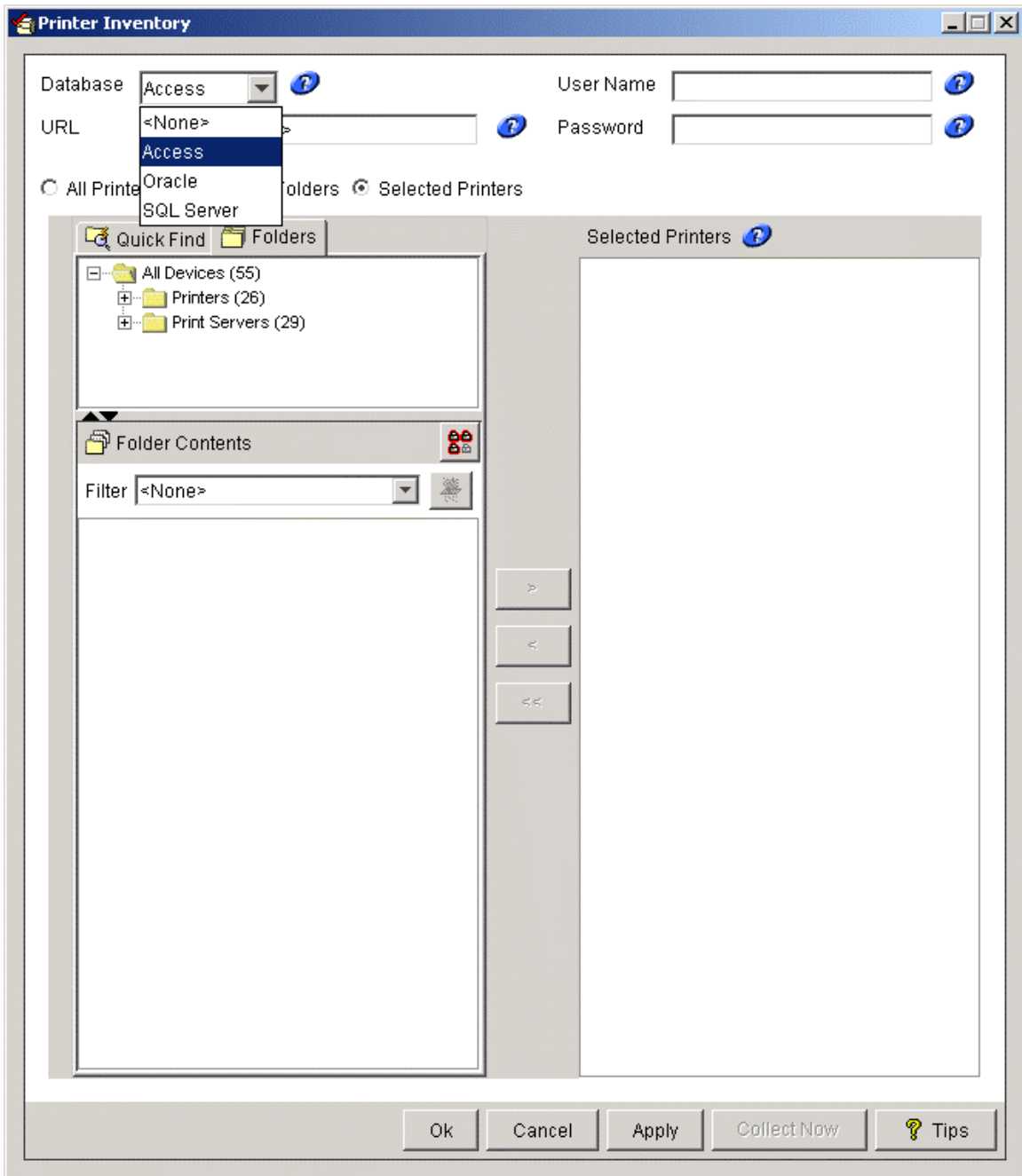
- How many printers do we have on our server(s) / network?
- What types of printers do we have?
- What options are installed on our printers?
- What is the lifetime page count of our printers?
- What are the addresses of our printers?

3.1 Configuring MarkVision Professional

Open the MarkVision Professional client. Select “Actions” on the toolbar and then “Printer Inventory” from the drop-down list, or “Printer Inventory” from the “All Tasks” list.



The Printer Inventory screen should be displayed.



Select the appropriate database. Follow database specific instructions in the [Configuring Database Driver](#) section.

3.2 Table and Field Descriptions

The tables and descriptions of each field are listed below. The data types listed for each field listed are specific to Oracle databases. Please reference the [Data Type Conversion](#) section for converting to Microsoft Access or SQL Server data types.

3.2.1 RAWPRNINV

This is the master table for Printer Inventory. It contains data such as address, protocol, capability of the device, revision level, RAM size, etc.

| Field Name | Data Type | Supported MVP Release | Description |
|-------------------------------------------------------------------------------------------------------------------------------------------------------------------------------------------------------|---------------|-----------------------|---------------------------------------------------------------------------------------------------------|
| Note: All printers may not support some fields. For more specific information, please contact Lexmark Customer Support at http://support.lexmark.com. | | | |
| START_TIME_UTC | NUMBER(10) | MVP 7.1 | Time at which this printer inventory was initiated, in seconds elapsed since 0:00:00, Jan 1, 1900, GMT. |
| DEVICE_ID | VARCHAR2(255) | MVP 7.1 | String identifier Granite uses to identify this device. |
| VERSION | NUMBER(5) | MVP 7.1 | Version of the data format used in this table. |
| YEAR | NUMBER(4) | MVP 7.1 | Year in which this device inventory was initiated. |
| MONTH | NUMBER(2) | MVP 7.1 | Month in which this device inventory was initiated. |
| DAY | NUMBER(2) | MVP 7.1 | Day of the month in which this device inventory was initiated. |
| DAY_OF_WEEK | NUMBER(1) | MVP 7.1 | Day of week on which this device inventory was initiated. |
| HOURS | NUMBER(2) | MVP 7.1 | Hour of the day in which this device inventory was initiated. |
| MINUTES | NUMBER(2) | MVP 7.1 | Minute of the hour in which this device inventory was initiated. |
| SECONDS | NUMBER(2) | MVP 7.1 | Seconds of the minute in which this device inventory was initiated. |
| GMT_OFFSET_IN_SECONDS | NUMBER(5) | MVP 7.1 | Offset from GMT of the current time zone, in seconds. This is an integer from -43200 to 43200. |
| IS_USING_DST | VARCHAR2(1) | MVP 7.1 | Does the current time zone use Daylight Savings Time? Possible values = "Y" for true, "N" for false. |
| DST_OFFSET_IN_SECONDS | NUMBER(4) | MVP 7.1 | Offset from Standard Time of the current time zone, in seconds. |
| DATA_SOURCE | VARCHAR2(32) | MVP 7.1 | Where did this record come from? Possible Values: 'Granite V.x.x' |

| | | | |
|------------------------|--------------|----------|-------------------------------------------------------------------------------------------------------------|
| RMIPORTNUMBER | NUMBER(10) | MVP 10.1 | Marvision Sever's RMI service Port Number |
| SERVER_IP_ADDRESS | VARCHAR2(20) | MVP 10.1 | IP Address of the host m/c on which Markvision server is running |
| MANUFACTURER | VARCHAR2(32) | MVP 7.1 | Device manufacturer. |
| PANEL_IS_LOCKED | VARCHAR2(1) | MVP 7.1 | Specifies if the device operator panel is currently locked from accepting button presses. |
| PANEL_SIZE_UNITS | VARCHAR2(16) | MVP 7.1 | Currently, the value "Characters" is always returned. |
| PANEL_WIDTH | NUMBER(10) | MVP 7.1 | Width of device's remote operator panel in characters. |
| PANEL_HEIGHT | NUMBER(10) | MVP 7.1 | Height of device's remote operator panel in characters. |
| LIFETIME_PAGE_COUNT | NUMBER(10) | MVP 7.1 | Lifetime page count of this device at the time of this inventory. |
| MODEL_NAME | VARCHAR2(64) | MVP 7.1 | Model name of device. |
| SERIAL_NUMBER | VARCHAR2(32) | MVP 7.1 | Device serial number. |
| RAM_SIZE | NUMBER(10) | MVP 7.1 | Total amount of main memory on this device. |
| SPEED | NUMBER(10) | MVP 7.1 | Speed at which this device prints. |
| SPEED_UNITS | VARCHAR2(45) | MVP 7.1 | Units in which print speed is measured (e.g. Sheets Per Minute) |
| DISPLAY_LANGUAGE | VARCHAR2(32) | MVP 7.1 | The language in which the panel data lines and function strings are returned. |
| MARKING_TECHNOLOGY | VARCHAR2(45) | MVP 7.1 | Technology used by this device to transfer electronic data to paper. |
| COLOR_CAPABILITIES | VARCHAR2(32) | MVP 7.1 | Possible Values: Unknown, CMY Color, CMYK Color, Monochrome, Spot Color |
| PRODUCT_REVISION | VARCHAR2(32) | MVP 7.1 | The product revision. |
| BRASS_TAG | VARCHAR2(40) | MVP 7.1 | This is a general purpose string used to identify this device; The user may set this to anything they want. |
| DUPLEX_SHORT_EDGE_BIND | VARCHAR2(1) | MVP 7.1 | Possible Values: "true" or "false". |
| DUPLEX_LONG_EDGE_BIND | VARCHAR2(1) | MVP 7.1 | Possible Values: "true" or "false". |
| REMINDER_DAY | NUMBER(2) | MVP 7.1 | Possible Values: 31 >= n |

| | | | |
|--------------------|---------------|---------|----------------------------------------------------------------------------------------------------------------------------------------------------------------------------------------------------------------------------------------------------|
| | | | >= 0; 0 = not set. |
| REMINDER_MONTH | NUMBER(2) | MVP 7.1 | Possible Values: 12 >= 0; 0 = not set. |
| REMINDER_YEAR | NUMBER(4) | MVP 7.1 | Possible Values: 255 n >= 0; offset from 1996: 0 = 1996, 1 = 1997, etc. |
| REMINDER_STATUS | NUMBER(3) | MVP 7.1 | Possible Values: Bit encoded: bits 0-3 = type, bit 0 = supplies, bit 1 = toner/ink, bit 2 = maintenance, bit 3 = other, bits 4-7 = status, bit 4 = reserved, bit 5 = acknowledged, bit 6 = assigned, bit 7 = completed. |
| DISK_SPOOLER_PCT | NUMBER(10) | MVP 7.1 | Percent of the disk used by the buffering partition. WARNING: Only valid with job buffering version 1. (See the device's capability list.) |
| DISK_SPOOLER_FREE | NUMBER(10) | MVP 7.1 | Percent of buffering partition currently free. This information is not available on certain older printers. WARNING: Only valid with job buffering version 1. (See the device's capability list.) |
| IS_COMMUNICATING | VARCHAR2(1) | MVP 7.1 | Always set to "Y". |
| MAC_ADDRESS | VARCHAR2(12) | MVP 7.1 | The MAC address for the print server in MSB form. (This value will equal the LAA, if it's being used; otherwise, it will equal the UAA.) |
| IP_ADDRESS | VARCHAR2(15) | MVP 7.1 | The print server's IP address. |
| SUBNET_MASK | VARCHAR2(15) | MVP 7.1 | The print server's network mask. |
| DNS_NAME | VARCHAR2(255) | MVP 7.1 | DNS Name for this device. |
| GATEWAY_ADDRESS | VARCHAR2(15) | MVP 7.1 | The IP address of the print server's gateway. |
| NOVELL_NETWORK_NUM | VARCHAR2(8) | MVP 7.1 | Network Number of this device. |
| LEXLINK_NICKNAME | VARCHAR2(25) | MVP 7.1 | The nickname assigned to the print server for the LexLink protocol. |
| NETWARE_LOGIN_NAME | VARCHAR2(44) | MVP 7.1 | The print server's NetWare login name. |
| APPLETALK_NAME | VARCHAR2(33) | MVP 7.1 | The network name. |
| APPLETALK_ZONE | VARCHAR2(33) | MVP 7.1 | The network zone. |

| | | | |
|--------------------------|---------------|---------|-----------------------------------------------------------------------------------------------------------------------------------------------------------------------------------------------------------------------------------------------------------------------------------------------------------------------------------------------------------------------------------------------------------------|
| APPLETALK_TYPE | VARCHAR2(33) | MVP 7.1 | The network type. |
| COPIER_OPTION_NAME | VARCHAR2(24) | MVP 7.1 | The name of the copier option. |
| COPIER_OPTION_CODE_LEVEL | VARCHAR2(16) | MVP 7.1 | The code level of the copier option. |
| CONTROL_PANEL_NAME | VARCHAR2(24) | MVP 7.1 | The panel name of the panel. |
| CONTROL_PANEL_CODE_LEVEL | VARCHAR2(16) | MVP 7.1 | The code level of the panel. |
| CONTACT_NAME | VARCHAR2(255) | MVP 7.1 | Contact for this device. |
| CONTACT_LOCATION | VARCHAR2(255) | MVP 7.1 | Location of contact for this device. |
| SYSTEM_NAME | VARCHAR2(255) | MVP 7.1 | SNMP System device name. |
| | | | "Y" or "N". A value of "N" indicates that the secondary tables have not yet been updated with the data corresponding to this row. Any utility which performs SQL queries on the printer inventory data should check the DATA_READY field before displaying that data to the user. If DATA_READY = "N" this row should be ignored along with any data corresponding to it that is found in the secondary tables. |
| DATA_READY | VARCHAR2(1) | MVP 7.1 | |
| WEB_ENABLED | VARCHAR2(1) | MVP 7.1 | Is this device's adapter web-enabled? |
| FAMILY_ID | NUMBER(10) | MVP 7.1 | The family id specifying to which family this device belongs. |

3.2.2 RAWPIEMULATOR

This table contains records pertaining to the type of emulation available on the device.

| Field Name | Data Type | Supported MVP Release | Description |
|-------------------------------------------------------------------------------------------------------------------------------------------------------------------------------------------------------|---------------|-----------------------|--------------------------------------------------------------------------------------------------------|
| Note: All printers may not support some fields. For more specific information, please contact Lexmark Customer Support at http://support.lexmark.com. | | | |
| DEVICE_ID | VARCHAR2(255) | MVP 7.1 | String identifier MarkVision uses to identify this device. |
| START_TIME_UTC | NUMBER(10) | MVP 7.1 | Time at which this device inventory was initiated, in seconds elapsed since 0:00:00, Jan 1, 1900, GMT. |
| VERSION | NUMBER(5) | MVP 7.1 | Version of the data format |

| | | | |
|------------------|---------------|---------|---------------------------|
| | | | used in this table. |
| NAME | VARCHAR2(64) | MVP 7.1 | Download emulator name. |
| EMULATOR_VERSION | VARCHAR2(64) | MVP 7.1 | Version of this emulator. |
| MISC | VARCHAR2(255) | MVP 7.1 | Miscellaneous. |

3.2.3 RAWPIPHYSICALPORT

This table contains records pertaining to the actual port to which a job was submitted to the device, such as network, serial, parallel, etc.

| Field Name | Data Type | Supported MVP Release | Description |
|-------------------------------------------------------------------------------------------------------------------------------------------------------------------------------------------------------|---------------|-----------------------|------------------------------------------------------------------------------------------------------------------------------------------------------------------------------------------------------------------------------------------|
| Note: All printers may not support some fields. For more specific information, please contact Lexmark Customer Support at http://support.lexmark.com. | | | |
| DEVICE_ID | VARCHAR2(255) | MVP 7.1 | String identifier MarkVision uses to identify this device. |
| START_TIME_UTC | NUMBER(10) | MVP 7.1 | Time at which this device inventory was initiated, in seconds elapsed since 0:00:00, Jan 1, 1900, GMT. |
| VERSION | NUMBER(5) | MVP 7.1 | Version of the data format used in this table. |
| NAME | VARCHAR2(64) | MVP 7.1 | Physical port name. Possible Values: Fax[n] 4 >= n >= 1, IR[n] 4 >= n >= 1, Internal[n] 3 >= n >= 1, LocalTalk[n] 4 >= n >= 1, Network[n] 6 >= n >= 1, Parallel[n] 4 >= n >= 1, Serial[n] 4 >= n >= 1, USB[n] 4 >= n >= 1, NetworkStd |
| IS_BUFFERED | VARCHAR2(1) | MVP 7.3 | Reveals if the data is buffered on the internal hard drive of the device. Possible values: Y or N |

3.2.4 RAWPIINTERPRETER

This table contains records pertaining to the language and emulation version of the device.

| Field Name | Data Type | Supported MVP Release | Description |
|-------------------------------------------------------------------------------------------------------------------------------------------------------------------------------------------------------|---------------|-----------------------|---------------------------------------------------------------------------------------------------|
| Note: All printers may not support some fields. For more specific information, please contact Lexmark Customer Support at http://support.lexmark.com. | | | |
| DEVICE_ID | VARCHAR2(255) | MVP 7.1 | String identifier MarkVision uses to identify this device. |
| START_TIME_UTC | NUMBER(10) | MVP 7.1 | Time at which this device inventory was initiated, in seconds elapsed since 0:00:00, Jan 1, 1900, |

| | | | |
|---------------------|--------------|---------|-----------------------------------------------------------------------------------------------------------------------------------------------------------------------------------------------------------------------------------------------|
| | | | GMT. |
| VERSION | NUMBER(5) | MVP 7.1 | Version of the data format used in this table. |
| NAME | VARCHAR2(64) | MVP 7.1 | Possible Values: Any string, PCL 5 Emulation, PCL XL Emulation, PCL 3 Emulation, PostScript Emulation, IPDS Emulation, GL 1 Emulation, PPDS, PJI, HTML, WinImage, LexGear, NPAP, SCS/Telnet, Automatic Language Switching, Download Emulation |
| FREE_MEMORY | NUMBER(10) | MVP 7.1 | The value of this field indicates the maximum amount of free memory in bytes available to this interpreter at point when the request is processed. |
| HORZ_RESOLUTION | NUMBER(5) | MVP 7.1 | This value defines the maximum horizontal marking resolution that this interpreter supports in this printer; defined as the resolution in the direction 90 degrees to the feed or motion of the print media. |
| VERT_RESOLUTION | NUMBER(5) | MVP 7.1 | This value defines the maximum vertical marking resolution that this interpreter supports in this printer; defined as the resolution in the same direction to the feed or motion of the print media. |
| NUM_FONTS | NUMBER(5) | MVP 7.1 | Number of fonts currently available to this interpreter. |
| NUM_INPUTS | NUMBER(3) | MVP 7.1 | Number of input trays this interpreter supports on this printer. |
| NUM_OUTPUTS | NUMBER(3) | MVP 7.1 | Number of output bins this interpreter supports on this printer. |
| INTERPRETER_VERSION | VARCHAR2(64) | MVP 7.1 | The version of the interpreter. |
| LANGUAGE_LEVEL | VARCHAR2(32) | MVP 7.1 | The language level. |
| LANGUAGE_VERSION | VARCHAR2(32) | MVP 7.1 | The language version. |
| DEFAULT_ORIENTATION | VARCHAR2(16) | MVP 7.1 | The default orientation. |

3.2.5 RAWPISUPPLY

This table contains records pertaining to the physical printing ink and toner supply for printer inventory.

| Field Name | Data Type | Supported MVP Release | Description |
|-------------------------------------------------------------------------------------------------------------------------------------------------------------------------------------------------------|---------------|-----------------------|------------------------------------------------------------------------------------------------------------------------------------------------------------------------------------------------------------------------------|
| Note: All printers may not support some fields. For more specific information, please contact Lexmark Customer Support at http://support.lexmark.com. | | | |
| START_TIME_UTC | NUMBER(10) | MVP 7.1 | Time at which this device inventory was initiated, in seconds elapsed since 0:00:00, Jan 1, 1900, GMT. |
| DEVICE_ID | VARCHAR2(255) | MVP 7.1 | String identifier MarkVision uses to identify this device. |
| VERSION | NUMBER(5) | MVP 7.1 | Version of the data format used in this table. |
| NAME | VARCHAR2(64) | MVP 7.1 | Name of the supply |
| SUPPLY_TYPE | VARCHAR2(32) | MVP 7.1 | Specifies the type of supply; This attribute is always present. Possible Values: Container , Drum ,Fuser, Ink, Oil, Process Cartridge, Staples, Toner , Transfer Belt , Print Head ,Thin Coat, Fuser Cleaner , Pickup Roller |
| COLOR | VARCHAR2(16) | MVP 7.1 | Specifies the color of this supply; This attribute is present only if type is equal to "Ink", "Toner" or "Drum". Possible Values: Black , Cyan, Magenta, Multi, Yellow |
| IS_PHOTO | VARCHAR2(1) | MVP 7.1 | Specifies if this is a photo ink cartridge; This attribute is present only if type is equal to "Ink" |
| SMART_CART_CURR_SN | VARCHAR2(32) | MVP 7.1 | The current smart cartridge serial number. |
| SMART_CART_CURR_IS_REFILLED | VARCHAR2(1) | MVP 7.1 | Specifies if this is a refilled cartridge. Possible values = "Y" for true, "N" for false. |
| SMART_CART_CURR_IS_PREBATE | VARCHAR2(1) | MVP 7.1 | Specifies if this is a prebate cartridge. Possible values = "Y" for true, "N" for false. |
| SMART_CART_PREV_SN | VARCHAR2(32) | MVP 7.1 | The previous smart card serial number. |
| CAPACITY | NUMBER(8) | MVP 10.1 | The maximum capacity of the supply. NOTE: This |

| | | | |
|----------------|--------------|----------|---------------------------------------------------------------------------------------------------------------------------------------------------------------------------------------------------------------------------------------------------------|
| | | | information is not available for every supply and is not available for every printer family. |
| CAPACITY_UNITS | VARCHAR2(32) | MVP 10.1 | The units in which the capacity is reported. Currently, Lexmark printers only support sheet-level reporting. |
| PERCENT_FULL | NUMBER(4) | MVP 10.1 | The current percentage of supply remaining. NOTE: This information will not be completely accurate and could vary widely from the actual percentage of supply residing in the printer. Also, this information is not available on every printer family. |
| TONER_TYPE | VARCHAR2(32) | MVP 10.1 | Optional type description of the supply. Possible values: 'MICR', 'Non-MICR', and 'Special'. NOTE: This information will not be available on every printer family. |

3.2.6 RAWPIFONTOPTION

This table contains records pertaining to the fonts available on the selected device.

| Field Name | Data Type | Supported MVP Release | Description |
|-------------------------------------------------------------------------------------------------------------------------------------------------------------------------------------------------------|---------------|-----------------------|--------------------------------------------------------------------------------------------------------|
| Note: All printers may not support some fields. For more specific information, please contact Lexmark Customer Support at http://support.lexmark.com. | | | |
| START_TIME.UTC | NUMBER(10) | MVP 7.1 | Time at which this device inventory was initiated, in seconds elapsed since 0:00:00, Jan 1, 1900, GMT. |
| DEVICE_ID | VARCHAR2(255) | MVP 7.1 | String identifier MarkVision uses to identify this device. |
| VERSION | NUMBER(5) | MVP 7.1 | Version of the data format used in this table. |
| ID | NUMBER(3) | MVP 7.1 | Physical slot in which the option resides. |
| PART_NUMBER | VARCHAR2(128) | MVP 7.1 | Part number of the card/cartridge. WARNING: Only valid with 'Font Cartridge'. |
| PART_NAME | VARCHAR2(128) | MVP 7.1 | Part name of the card/cartridge. WARNING: Only valid |

| | | | |
|--------|---------------|---------|----------------------------------------------------------------------------------|
| | | | with 'Font Cartridge'. |
| FORMAT | VARCHAR2(128) | MVP 7.1 | Format of the font card/cartridge. WARNING: Only valid with 'Font Cartridge'. |

3.2.7 RAWPICODELEVEL

This table contains records pertaining to the code level of the device.

| Field Name | Data Type | Supported MVP Release | Description |
|-------------------------------------------------------------------------------------------------------------------------------------------------------------------------------------------------------|---------------|-----------------------|--------------------------------------------------------------------------------------------------------|
| Note: All printers may not support some fields. For more specific information, please contact Lexmark Customer Support at http://support.lexmark.com. | | | |
| START_TIME_UTC | NUMBER(10) | MVP 7.1 | Time at which this device inventory was initiated, in seconds elapsed since 0:00:00, Jan 1, 1900, GMT. |
| DEVICE_ID | VARCHAR2(255) | MVP 7.1 | String identifier MarkVision uses to identify this device. |
| VERSION | NUMBER(5) | MVP 7.1 | Version of the data format used in this table. |
| NAME | VARCHAR2(64) | MVP 7.1 | Item to which the listed CODE_LEVEL applies e.g. 'engine', 'flash', 'panel', etc. |
| CODE_LEVEL | VARCHAR2(50) | MVP 7.1 | Code version of the item indicated by NAME. |

3.2.8 RAWPIOPTION

This table contains records pertaining to internal options installed on the device, such as memory size, disk, network adapter, etc.

| Field Name | Data Type | Supported MVP Release | Description |
|-------------------------------------------------------------------------------------------------------------------------------------------------------------------------------------------------------|---------------|-----------------------|--------------------------------------------------------------------------------------------------------|
| Note: All printers may not support some fields. For more specific information, please contact Lexmark Customer Support at http://support.lexmark.com. | | | |
| START_TIME_UTC | NUMBER(10) | MVP 7.1 | Time at which this device inventory was initiated, in seconds elapsed since 0:00:00, Jan 1, 1900, GMT. |
| DEVICE_ID | VARCHAR2(255) | MVP 7.1 | String identifier MarkVision uses to identify this device. |
| VERSION | NUMBER(5) | MVP 7.1 | Version of the data format used in this table. |
| NAME | VARCHAR2(64) | MVP 7.1 | Possible values: Flash, Disk, TriPort, Internal Network Adapter, Parallel, An SNMP Printer |

| | | | |
|-------------|------------|---------|---------------------------------------------------------------------------------------|
| | | | may return any string. |
| ID | NUMBER(3) | MVP 7.1 | Option ID. |
| OPTION_SIZE | NUMBER(12) | MVP 7.1 | Physical size of the option in bytes. WARNING: Only valid with 'Disk' and 'Flash'. |
| FREE_SPACE | NUMBER(12) | MVP 7.1 | Free space of the option in bytes. WARNING: Only valid with 'Disk' and 'Flash'. |

3.2.9 RAWPIINPUTOPTION

This table contains records pertaining to the input option installed on the device.

| Field Name | Data Type | Supported MVP Release | Description |
|-------------------------------------------------------------------------------------------------------------------------------------------------------------------------------------------------------|---------------|-----------------------|-------------------------------------------------------------------------------------------------------------------------------------------------------------------------------------------------------------------------------------------------------------------------------------|
| Note: All printers may not support some fields. For more specific information, please contact Lexmark Customer Support at http://support.lexmark.com. | | | |
| START_TIME_UTC | NUMBER(10) | MVP 7.3 | Time at which this device inventory was initiated, in seconds elapsed since 0:00:00, Jan 1, 1900, GMT. |
| DEVICE_ID | VARCHAR2(255) | MVP 7.3 | String identifier MarkVision uses to identify this device. |
| VERSION | NUMBER(5) | MVP 7.3 | Version of the data format used in this table. |
| NAME | VARCHAR2(64) | MVP 7.3 | The name of a physical input device option. Possible Values: Multi-purpose Tray, Integrated Tray, Single Tray Input, Single Tray Input [N], Dual Tray Input, Dual Tray Input [N], Single Feeder, Single Feeder [N], Dual Feeder, Dual Feeder [N], Duplexor, Unknown Input Option |
| OPTION_TYPE | VARCHAR2(32) | MVP 7.3 | The type of a physical input device option. Possible Values: Multi-purpose Tray, Integrated Tray, Single Tray Input, Single Tray Input [N], Dual Tray Input, Dual Tray Input [N], Single Feeder, Single Feeder [N], Dual Feeder, Dual Feeder [N], Duplexor, Unknown Input Option |

| | | | |
|-----------|-----------|---------|----------------------------------------------------------------------------|
| BIN_COUNT | NUMBER(3) | MVP 7.3 | The number of bins/outputs supported by the physical output device option. |
|-----------|-----------|---------|----------------------------------------------------------------------------|

3.2.10 RAWPIINPUT

This table contains records pertaining to the types and number of inputs available on the device

| Field Name | Data Type | Supported MVP Release | Description |
|-------------------------------------------------------------------------------------------------------------------------------------------------------------------------------------------------------|---------------|-----------------------|--------------------------------------------------------------------------------------------------------|
| Note: All printers may not support some fields. For more specific information, please contact Lexmark Customer Support at http://support.lexmark.com. | | | |
| START_TIME_UTC | NUMBER(10) | MVP 7.1 | Time at which this device inventory was initiated, in seconds elapsed since 0:00:00, Jan 1, 1900, GMT. |
| DEVICE_ID | VARCHAR2(255) | MVP 7.1 | String identifier MarkVision uses to identify this device. |
| VERSION | NUMBER(5) | MVP 7.1 | Version of the data format used in this table. |
| NAME | VARCHAR2(64) | MVP 7.1 | The name. |
| CAPACITY | NUMBER(10) | MVP 7.1 | The capacity. |
| CAPACITY_UNITS | VARCHAR2(40) | MVP 7.1 | The units. |
| CURRENT_LEVEL | NUMBER(10) | MVP 7.1 | The current level. |
| FORM_SIZE | VARCHAR2(40) | MVP 7.1 | The form size. |
| FORM_TYPE | VARCHAR2(40) | MVP 7.1 | The form type. |
| FEED_TYPE | VARCHAR2(40) | MVP 7.1 | The feed type. |

3.2.11 RAWPIOUTPUTOPTION

This table contains records pertaining to the physical output options **installed** on the device.

| Field Name | Data Type | Supported MVP Release | Description |
|-------------------------------------------------------------------------------------------------------------------------------------------------------------------------------------------------------|---------------|-----------------------|--------------------------------------------------------------------------------------------------------------------|
| Note: All printers may not support some fields. For more specific information, please contact Lexmark Customer Support at http://support.lexmark.com. | | | |
| START_TIME_UTC | NUMBER(10) | MVP 7.1 | Time at which this device inventory was initiated, in seconds elapsed since 0:00:00, Jan 1, 1900, GMT. |
| DEVICE_ID | VARCHAR2(255) | MVP 7.1 | String identifier MarkVision uses to identify this device. |
| VERSION | NUMBER(5) | MVP 7.1 | Version of the data format used in this table. |
| NAME | VARCHAR2(64) | MVP 7.1 | The name of a physical output device option. Possible Values: Stacker, Stacker [N], High Capacity Stacker, [N] Bin |

| | | | |
|-------------|--------------|---------|---------------------------------------------------------------------------------------------------------------------------------------------------------------------------------------------------------------------|
| | | | Mailbox, [N] Bin Mailbox [N], Finisher, Integrated Hopper, Rear, Unknown Output Option |
| OPTION_TYPE | VARCHAR2(32) | MVP 7.1 | The type of a physical output device option. Possible Values: Stacker, High Capacity Stacker, [N] Bin Mailbox e.g. 5 Bin Mailbox, 10 Bin Mailbox, etc., Finisher, Integrated Hopper, Rear, Unknown Output Option |
| BIN_COUNT | NUMBER(3) | MVP 7.1 | The number of bins/outputs supported by the physical output device option. |

3.2.12 RAWPIOUTPUT

This table contains records pertaining to physical output option **capabilities** of the device.

| Field Name | Data Type | Supported MVP Release | Description |
|-------------------------------------------------------------------------------------------------------------------------------------------------------------------------------------------------------|---------------|-----------------------|---------------------------------------------------------------------------------------------------------------------|
| Note: All printers may not support some fields. For more specific information, please contact Lexmark Customer Support at http://support.lexmark.com. | | | |
| START_TIME_UTC | NUMBER(10) | MVP 7.1 | Time at which this device inventory was initiated, in seconds elapsed since 0:00:00, Jan 1, 1900, GMT. |
| DEVICE_ID | VARCHAR2(255) | MVP 7.1 | String identifier MarkVision uses to identify this device. |
| VERSION | NUMBER(5) | MVP 7.1 | Version of the data format used in this table. |
| NAME | VARCHAR2(64) | MVP 7.1 | Possible Values: Bin [n] 15 >= n >= 1, Finisher, Rear Bin, Front Bin, Side Output, Standard Bin, Top Output |
| CAPACITY | NUMBER(10) | MVP 7.1 | Output capacity, integer value. |
| CAPACITY_UNITS | VARCHAR2(40) | MVP 7.1 | Units corresponding to CAPACITY column e.g. Sheets, Inches, etc. |
| OPTION_NAME | VARCHAR2(64) | MVP 7.1 | Physical output device option name. |
| OPTION_LOCATION | NUMBER(5) | MVP 7.1 | This is the individual location within a physical output device option where this output resides. Positive integer. |

| | | | |
|-----------------------|-------------|---------|------------------------------------------------------------------------------------------------------------------------------------|
| IS_FACE_UP | VARCHAR2(1) | MVP 7.1 | Specifies if this output device supports this feature. Possible values = "Y" for true, "N" for false. |
| IS_SECURITY | VARCHAR2(1) | MVP 7.1 | Specifies if this output device supports this feature. Possible values = "Y" for true, "N" for false. |
| IS_BURSTING | VARCHAR2(1) | MVP 7.1 | Specifies if this output device supports this feature. Possible values = "Y" for true, "N" for false. |
| IS_FACE_DOWN | VARCHAR2(1) | MVP 7.1 | Specifies if this output device supports this feature. Possible values = "Y" for true, "N" for false. |
| IS_LEVEL_SENSING | VARCHAR2(1) | MVP 7.1 | Specifies if this output device supports this feature. Possible values = "Y" for true, "N" for false. |
| IS_COLLATION | VARCHAR2(1) | MVP 7.1 | Specifies if this output device supports this feature. Possible values = "Y" for true, "N" for false. |
| IS_SEPARATION | VARCHAR2(1) | MVP 7.1 | Specifies if this output device supports this feature. Possible values = "Y" for true, "N" for false. |
| IS_STITCHING | VARCHAR2(1) | MVP 7.1 | Specifies if this output device supports this feature. Possible values = "Y" for true, "N" for false. |
| IS_BINDING | VARCHAR2(1) | MVP 7.1 | Specifies if this output device supports this feature. Possible values = "Y" for true, "N" for false. |
| IS_PUNCHING | VARCHAR2(1) | MVP 7.1 | Specifies if this output device supports this feature. Possible values = "Y" for true, "N" for false. |
| IS_ADDITIONAL_OPTIONS | VARCHAR2(1) | MVP 7.1 | Specifies if this output device supports any other options not specifically listed. Possible values = "Y" for true, "N" for false. |

3.2.13 RAWPIDEVICESTATUS

This table contains records pertaining to the physical output options **installed** on the device.

| Field Name | Data Type | Supported MVP Release | Description |
|-------------------------------------------------------------------------------------------------------------------------------------------------------------------------------------------------------|---------------|-----------------------|----------------------------------------------------------------------------------------------------------------------|
| Note: All printers may not support some fields. For more specific information, please contact Lexmark Customer Support at http://support.lexmark.com. | | | |
| START_TIME_UTC | NUMBER(10) | MVP 10.0 | Time at which this device inventory was initiated, in seconds elapsed since 0:00:00, Jan 1, 1900, GMT. |
| DEVICE_ID | VARCHAR2(255) | MVP 10.0 | String identifier MarkVision uses to identify this device. |
| VERSION | NUMBER(5) | MVP 10.0 | Version of the data format used in this table. |
| MESSAGE_ID | VARCHAR2(64) | MVP 10.0 | Message saying the status of the trays like "Input Empty", "Input Low", "Tray Missing". |
| LOCATION_ID | VARCHAR2(64) | MVP 10.0 | Specifies the Input Trays like "Tray 1";Tray 2" |
| GRAPHIC_ID | NUMBER(3) | MVP 10.0 | Specifies the graphic Id. |
| SEVERITY | VARCHAR2(32) | MVP 10.0 | Specifies the message severity like "Warning" |
| DISPLAY_TEXT | VARCHAR2(64) | MVP 10.1 | The actual text displayed on the printer's op-panel. NOTE: This information is not available on every printer model. |
| ENABLE_CONTINUE | VARCHAR2(1) | MVP 10.0 | Specifies Enableability of continue. Possible values = "Y" for true, "N" for false. |
| ENABLE_RESET | VARCHAR2(1) | MVP 10.0 | Specifies whether resetting is enabled. Possible values = "Y" for true, "N" for false. |

3.2.14 RAWPISTATSJOB

This table contains records pertaining to the Job Statistics.

| Field Name | Data Type | Supported MVP Release | Description |
|-------------------------------------------------------------------------------------------------------------------------------------------------------------------------------------------------------|---------------|-----------------------|------------------------------------------------------------|
| Note: All printers may not support some fields. For more specific information, please contact Lexmark Customer Support at http://support.lexmark.com. | | | |
| DEVICE_ID | VARCHAR2(255) | MVP 10.0 | String identifier MarkVision uses to identify this device. |

| | | | |
|----------------|--------------|----------|--------------------------------------------------------------------------------------------------------|
| START_TIME_UTC | NUMBER(10) | MVP 10.0 | Time at which this device inventory was initiated, in seconds elapsed since 0:00:00, Jan 1, 1900, GMT. |
| VERSION | NUMBER(5) | MVP 10.0 | Version of the data format used in this table. |
| RECORD_ID | VARCHAR2(64) | MVP 10.0 | Related Name of identifier for the record ;possible values PS;PCL;XL;Other;UNKN OWN |
| RECORD_TYPE | VARCHAR2(64) | MVP 10.0 | Type of Record. Possible values Single; Range; List |
| VALUE_TYPE | VARCHAR2(64) | MVP 10.0 | The type of value Possible Values: Integer Date Float |
| UNITS | VARCHAR2(64) | MVP 10.0 | The unit in which the data is expressed. Possible Values: Pages; Percent |
| DATA | NUMBER(10) | MVP 10.0 | Column/Column value will exist For 'Single' record Type |
| CAPACITY | NUMBER(10) | MVP 10.0 | Column/Column value will exist For 'List' recordType |
| COUNT | NUMBER(10) | MVP 10.0 | Column/Column value will exist For 'List' Record Type |
| START | NUMBER(10) | MVP 10.0 | Column/Column value will exist For 'Range' record Type |
| STOP | NUMBER(10) | MVP 10.0 | Column/Column value will exist For 'Range' record Type |
| INCREMENT | NUMBER(10) | MVP 10.0 | Column/Column value will exist For 'Range' record Type |

3.2.15 RAWPISTATSPAPER

This table contains records pertaining to the Paper Statistics.

| Field Name | Data Type | Supported MVP Release | Description |
|-------------------------------------------------------------------------------------------------------------------------------------------------------------------------------------------------------|-----------|-----------------------|-------------|
| Note: All printers may not support some fields. For more specific information, please contact Lexmark Customer Support at http://support.lexmark.com. | | | |

| | | | |
|----------------|---------------|----------|--------------------------------------------------------------------------------------------------------------------------------------------------------------------------------------------------------------------------------------------------------------------------------------------------------------------------------------------------------------------------------------|
| DEVICE_ID | VARCHAR2(255) | MVP 10.0 | String identifier MarkVision uses to identify this device. |
| START_TIME_UTC | NUMBER(10) | MVP 10.0 | Time at which this device inventory was initiated, in seconds elapsed since 0:00:00, Jan 1, 1900, GMT. |
| VERSION | NUMBER(5) | MVP 10.0 | Version of the data format used in this table. |
| RECORD_ID | VARCHAR2(64) | MVP 10.0 | Related Name of identifier for the record ;possible values Plain Paper Colored Paper Transparency Card Stock Labels Letterhead Preprinted Bond Envelope Coated Paper Glossy Paper Iron On Photo Paper Greeting Card Custom Type 1 Custom Type 2 Custom Type 3 Custom Type 4 Custom Type 5 Custom Type 6 UNKNOWN |
| RECORD_TYPE | VARCHAR2(64) | MVP 10.0 | Type of Record. Possible values Single; Range; List |
| VALUE_TYPE | VARCHAR2(64) | MVP 10.0 | The type of value Possible Values: Integer Date Float |
| UNITS | VARCHAR2(64) | MVP 10.0 | The unit in which the data is expressed. Possible Values: Pages; Percent |
| DATA | NUMBER(10) | MVP 10.0 | Column/Column value will exist For 'Single' record Type |
| CAPACITY | NUMBER(10) | MVP 10.0 | Column/Column value will exist For 'List' record |

| | | | Type |
|-----------|------------|----------|--------------------------------------------------------|
| COUNT | NUMBER(10) | MVP 10.0 | Column/Column value will exist For 'List' Record Type |
| START | NUMBER(10) | MVP 10.0 | Column/Column value will exist For 'Range' record Type |
| STOP | NUMBER(10) | MVP 10.0 | Column/Column value will exist For 'Range' record Type |
| INCREMENT | NUMBER(10) | MVP 10.0 | Column/Column value will exist For 'Range' record Type |

3.2.16 RAWPISTATSSIDES

This table contains records pertaining to the Sides Statistics.

| Field Name | Data Type | Supported MVP Release | Description |
|-------------------------------------------------------------------------------------------------------------------------------------------------------------------------------------------------------|---------------|-----------------------|--------------------------------------------------------------------------------------------------------|
| Note: All printers may not support some fields. For more specific information, please contact Lexmark Customer Support at http://support.lexmark.com. | | | |
| DEVICE_ID | VARCHAR2(255) | MVP 10.0 | String identifier MarkVision uses to identify this device. |
| START_TIME_UTC | NUMBER(10) | MVP 10.0 | Time at which this device inventory was initiated, in seconds elapsed since 0:00:00, Jan 1, 1900, GMT. |
| VERSION | NUMBER(5) | MVP 10.0 | Version of the data format used in this table. |
| RECORD_ID | VARCHAR2(64) | MVP 10.0 | Related Name of identifier for the record ;possible values Total Mono Color UNKNOWN |
| RECORD_TYPE | VARCHAR2(64) | MVP 10.0 | Type of Record. Possible values Single; Range; List |
| VALUE_TYPE | VARCHAR2(64) | MVP 10.0 | The type of value Possible Values: Integer Date Float |
| UNITS | VARCHAR2(64) | MVP 10.0 | The unit in which the data is expressed. Possible Values: Pages; Percent |
| DATA | NUMBER(10) | MVP 10.0 | Column/Column value will exist For 'Single' record |

| | | | |
|-----------|------------|----------|--------------------------------------------------------|
| | | | Type |
| CAPACITY | NUMBER(10) | MVP 10.0 | Column/Column value will exist For 'List' record Type |
| COUNT | NUMBER(10) | MVP 10.0 | Column/Column value will exist For 'List' Record Type |
| START | NUMBER(10) | MVP 10.0 | Column/Column value will exist For 'Range' record Type |
| STOP | NUMBER(10) | MVP 10.0 | Column/Column value will exist For 'Range' record Type |
| INCREMENT | NUMBER(10) | MVP 10.0 | Column/Column value will exist For 'Range' record Type |

3.2.17 RAWPISTATSSUPPLIES

This table contains records pertaining to the Paper Statistics.

| Field Name | Data Type | Supported MVP Release | Description |
|-------------------------------------------------------------------------------------------------------------------------------------------------------------------------------------------------------|---------------|-----------------------|------------------------------------------------------------------------------------------------------------------------------------------------------------------------------------------------------------------------------------------------------------|
| Note: All printers may not support some fields. For more specific information, please contact Lexmark Customer Support at http://support.lexmark.com. | | | |
| DEVICE_ID | VARCHAR2(255) | MVP 10.0 | String identifier MarkVision uses to identify this device. |
| START_TIME_UTC | NUMBER(10) | MVP 10.0 | Time at which this device inventory was initiated, in seconds elapsed since 0:00:00, Jan 1, 1900, GMT. |
| VERSION | NUMBER(5) | MVP 10.0 | Version of the data format used in this table. |
| RECORD_ID | VARCHAR2(64) | MVP 10.0 | Related Name of identifier for the record ;possible values Black Toner Cyan Toner Magenta Toner Yellow Toner Black Image Drum Cyan Image Drum Magenta Image Drum Yellow Image Drum Multi Image Drum Fuser Transfer Roller |

| | | | |
|-------------|--------------|----------|---------------------------------------------------------------------------------------------------------------------------------------------------------------------------------------------------------------------------------------------------------------------------------------------------------------------------|
| | | | Coating Roller ITU Oiler Transfer Belt Black Ink Cyan Ink Magenta Ink Yellow Ink Black Ink - Photo Cartridge Magenta Ink - Photo Cartridge Cyan Ink - Photo Cartridge Color Print Head Black Print Head Thin Coat Waste Bottle Staples Hole Punch Box UNKNOWN |
| RECORD_TYPE | VARCHAR2(64) | MVP 10.0 | Type of Record. Possible values Single; Range; List |
| VALUE_TYPE | VARCHAR2(64) | MVP 10.0 | The type of value Possible Values: Integer Date Float |
| UNITS | VARCHAR2(64) | MVP 10.0 | The unit in which the data is expressed. Possible Values: Pages; Percent |
| DATA | NUMBER(10) | MVP 10.0 | Column/Column value will exist For 'Single' record Type |
| CAPACITY | NUMBER(10) | MVP 10.0 | Column/Column value will exist For 'List' record Type |
| COUNT | NUMBER(10) | MVP 10.0 | Column/Column value will exist For 'List' Record Type |
| START | NUMBER(10) | MVP 10.0 | Column/Column value will exist For 'Range' record Type |
| STOP | NUMBER(10) | MVP 10.0 | Column/Column value will exist For 'Range' record Type |
| INCREMENT | NUMBER(10) | MVP 10.0 | Column/Column value will exist For 'Range' record Type |

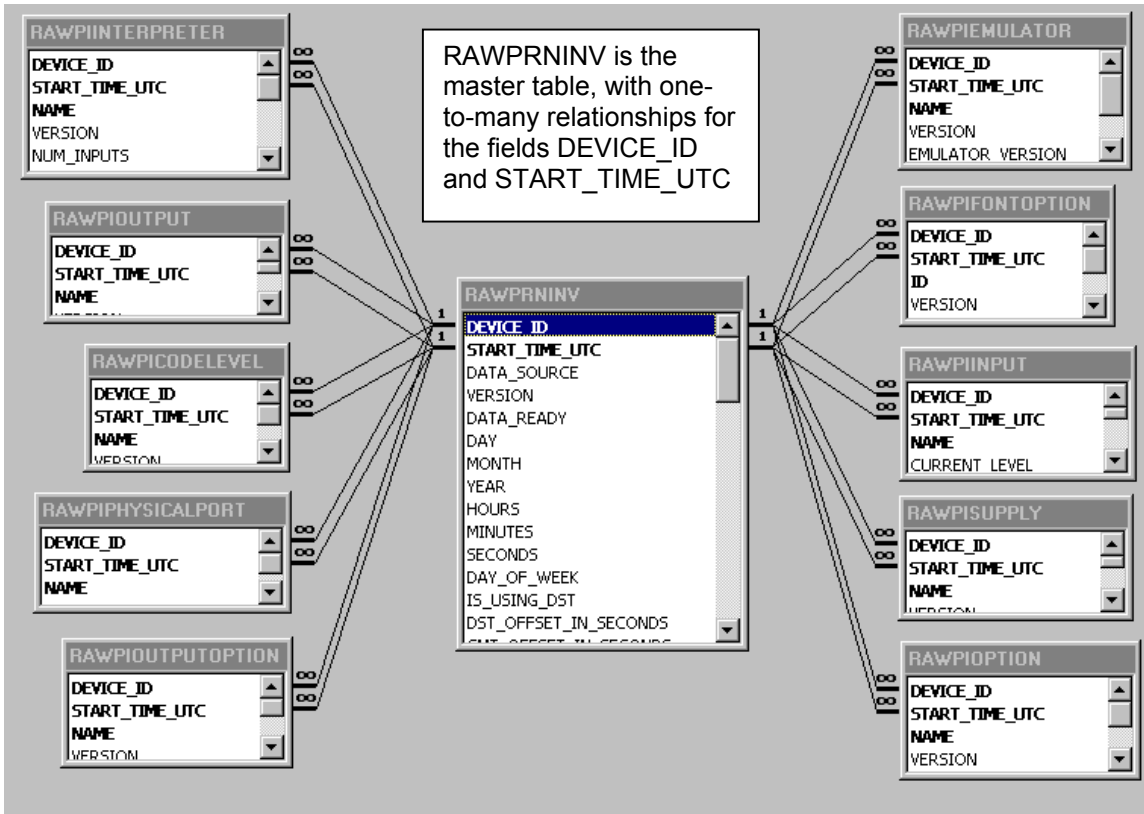
3.2.18 RAWPISTATSINSTALL

This table contains records pertaining to the Installed Date Statistics.

| Field Name | Data Type | Supported MVP Release | Description |
|-------------------------------------------------------------------------------------------------------------------------------------------------------------------------------------------------------|---------------|-----------------------|--------------------------------------------------------------------------------------------------------|
| Note: All printers may not support some fields. For more specific information, please contact Lexmark Customer Support at http://support.lexmark.com. | | | |
| DEVICE_ID | VARCHAR2(255) | MVP 10.0 | String identifier MarkVision uses to identify this device. |
| START_TIME_UTC | NUMBER(10) | MVP 10.0 | Time at which this device inventory was initiated, in seconds elapsed since 0:00:00, Jan 1, 1900, GMT. |
| VERSION | NUMBER(5) | MVP 10.0 | Version of the data format used in this table. |
| RECORD_ID | VARCHAR2(64) | MVP 10.0 | Related Name of identifier for the record ;possible values Installed Date UNKNOWN |
| RECORD_TYPE | VARCHAR2(64) | MVP 10.0 | Type of Record. Possible value: Single |
| VALUE_TYPE | VARCHAR2(64) | MVP 10.0 | The type of value Possible Value: Date |
| DATA | NUMBER(10) | MVP 10.0 | number of seconds since Jan. 1, 1970. |

3.3 Field Relationships

The master table for Printer Inventory is RAWPRNINV, with one-to-many relationships established between the top two fields, DEVICE_ID and START_TIME_UTC.



NOTE: The new table for MVP 7.3, RAWPIINPUTOPTION, has the same relationship values as RAWPIOUTPUTOPTION.

4. Job Statistics

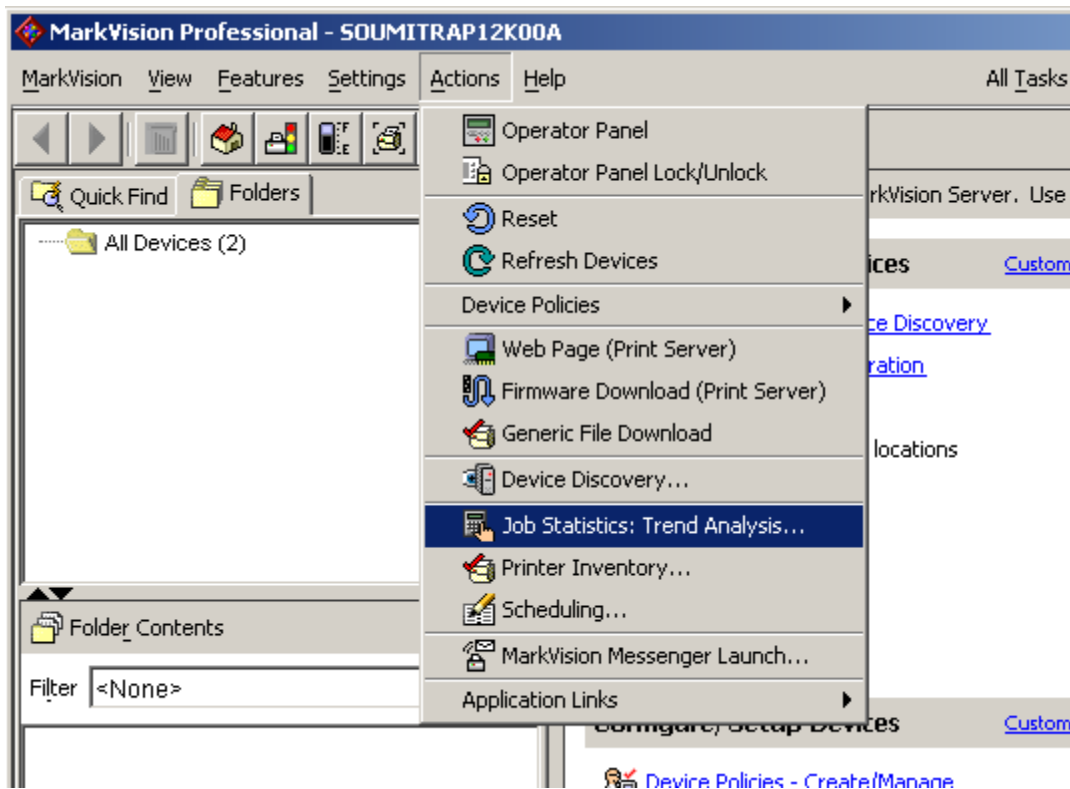
The Job Statistics task for MarkVision Professional allows you to collect information on processed jobs for a particular printer, or a group of printers. With the collected data you can create reports, perform trend analysis, and even drive a purchasing program to automatically order supplies such as toner, ink, and paper. See [Configuring Database Driver](#) for a description of supported databases.

4.1 Configuring MarkVision Professional

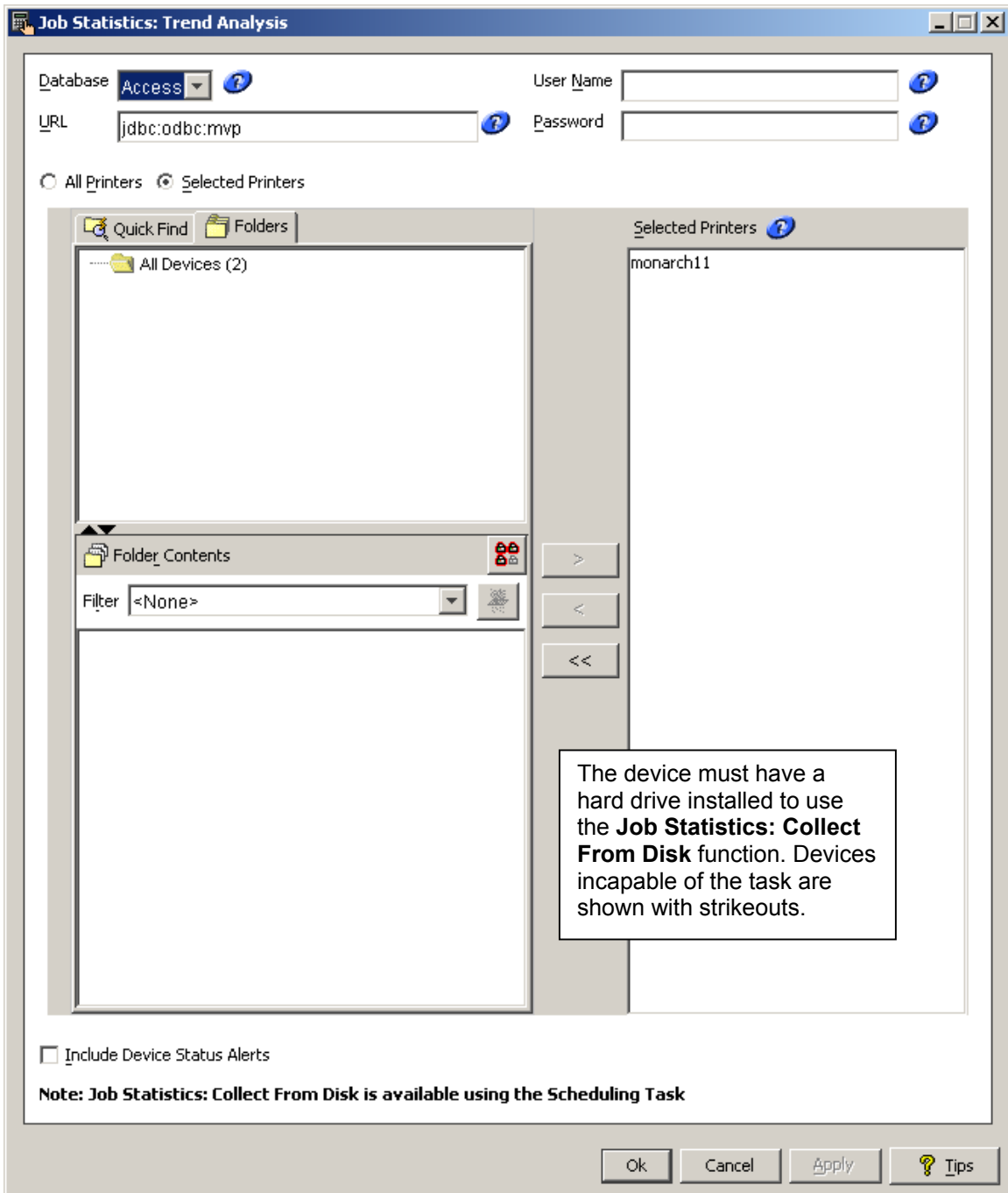
Job Statistics: Trend Analysis tells the printer to send an alert to the server each time a job is sent. **Job Statistics: Collect From Disk** tells the selected printer(s) to store the Job Statistics information on its own hard disk. The server may be scheduled to read this information and save it to a database. This method is the most reliable, but the user must set up the collection via the scheduling task, see the [Job Statistics: Collect From Disk](#) section.

4.1.1 Job Statistics (Trend Analysis)

Open the MarkVision Professional client. Select "Actions" on the toolbar and then "Job Statistics (Trend Analysis)" from the drop-down list, or "Job Statistics (Trend Analysis)" from the "All Tasks" list.

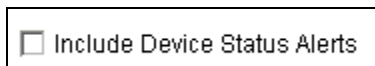


The Job Statistics screen should be displayed:



Select the appropriate database. Follow database specific instructions in the [Configuring Database Driver](#) section.

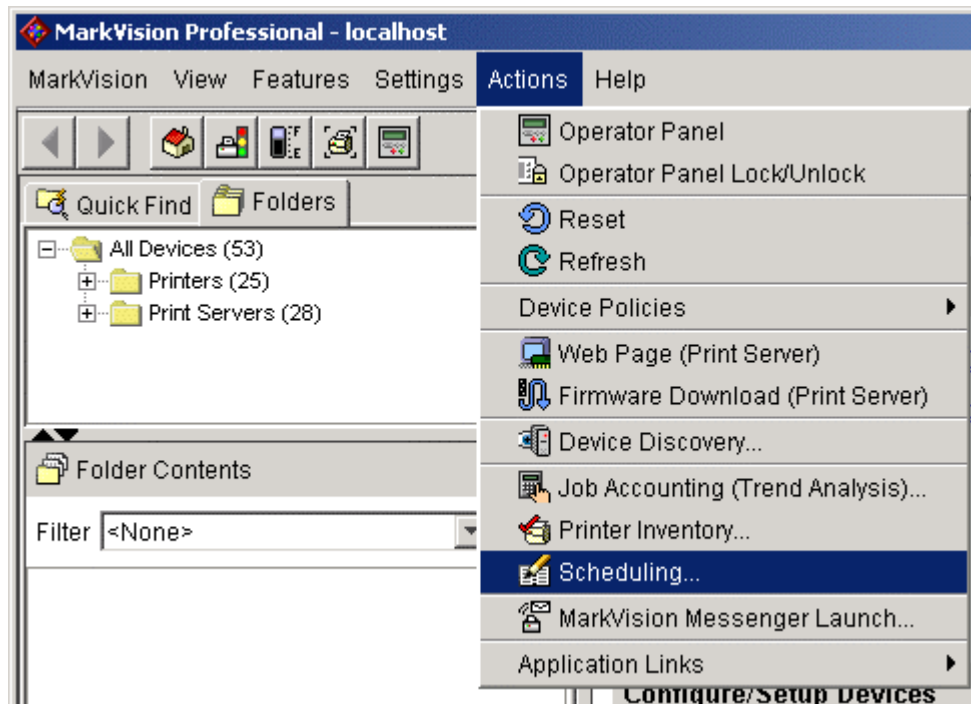
The **Selected Printers** list display any printers you have asked the server to monitor for Job Statistics alerts.



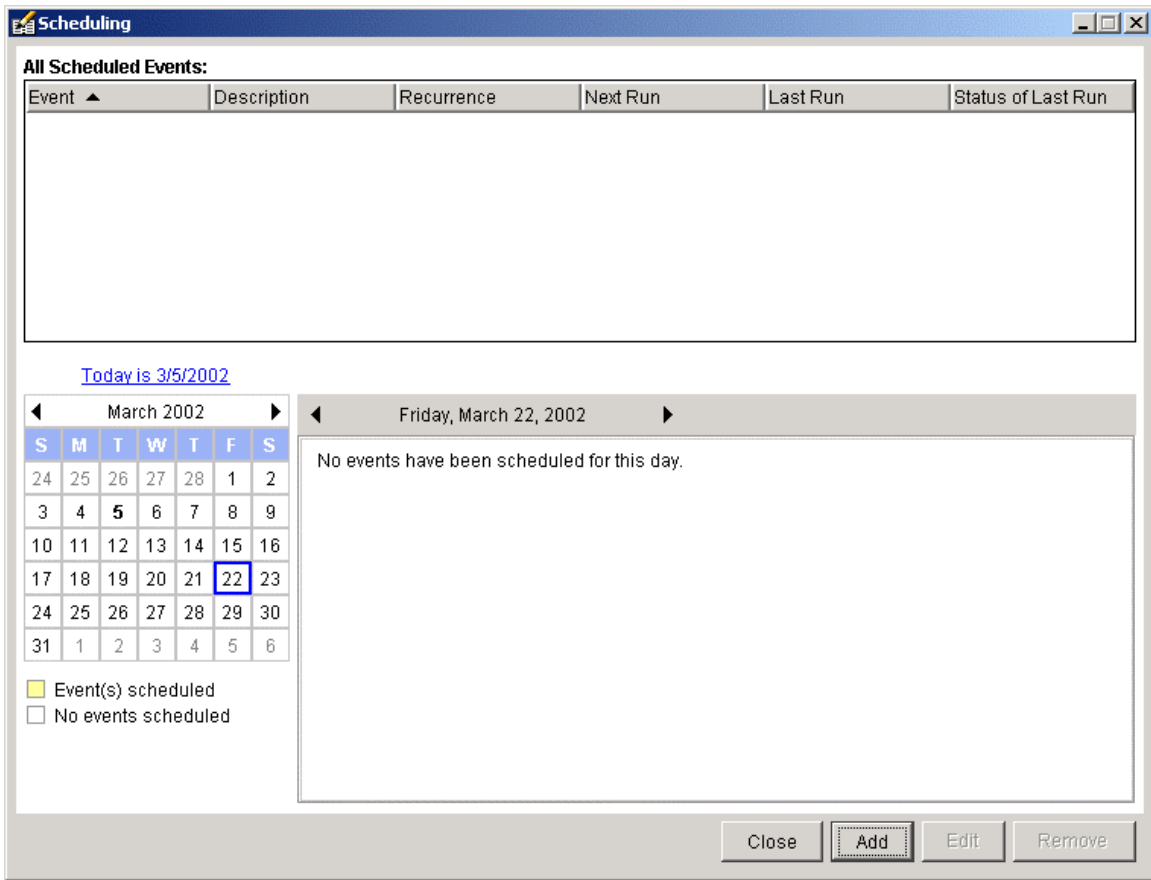
The checkbox to **Include Device Status Alerts** will populate certain device status tables when an error or warning condition is encountered. Please see the [Device Status](#) section for more information. This will increase network traffic.

4.1.2 Job Statistics: Collect From Disk

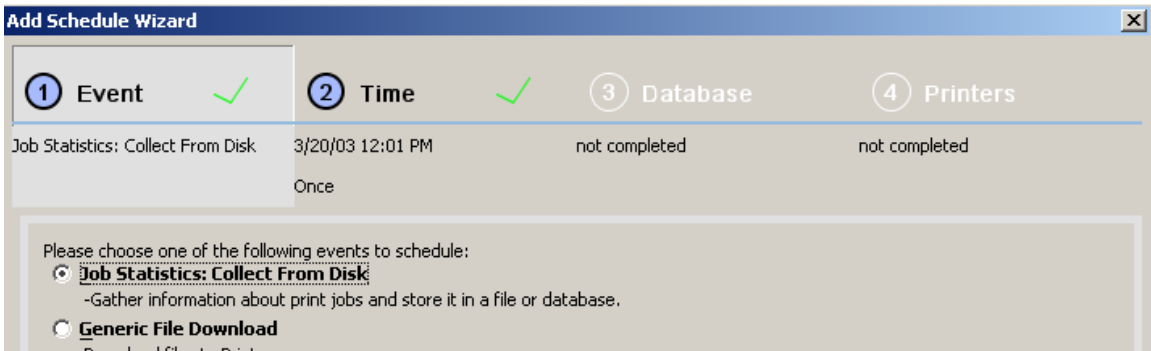
Open the MarkVision Professional client. Select “Actions” on the toolbar and then “Scheduling” from the drop-down list, or “Scheduling” from the “All Tasks” list.



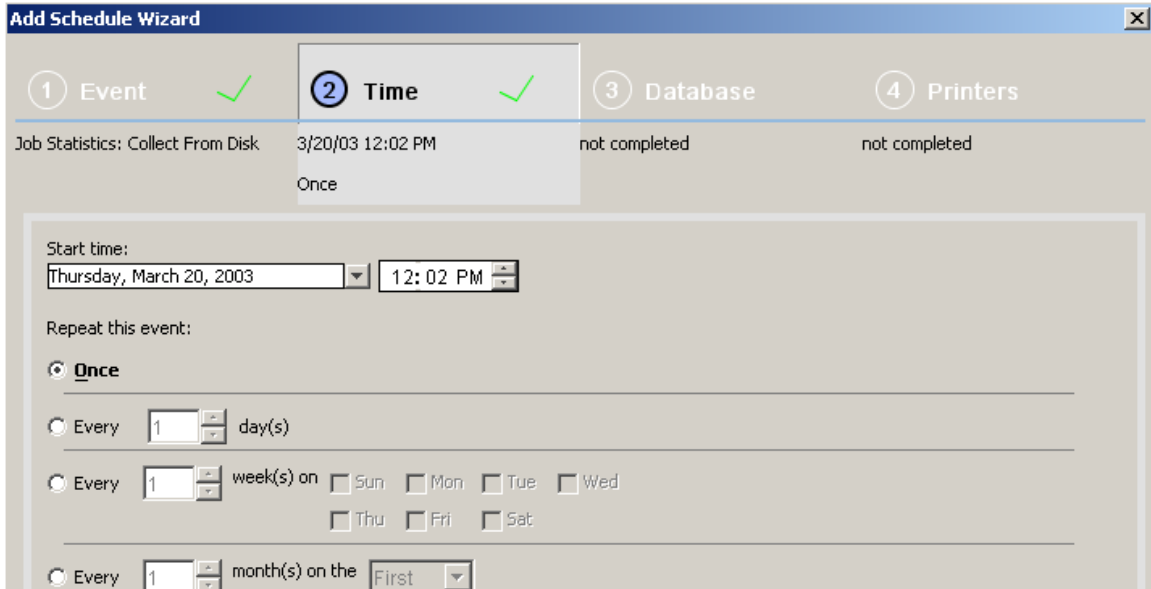
The Scheduling screen should be displayed:



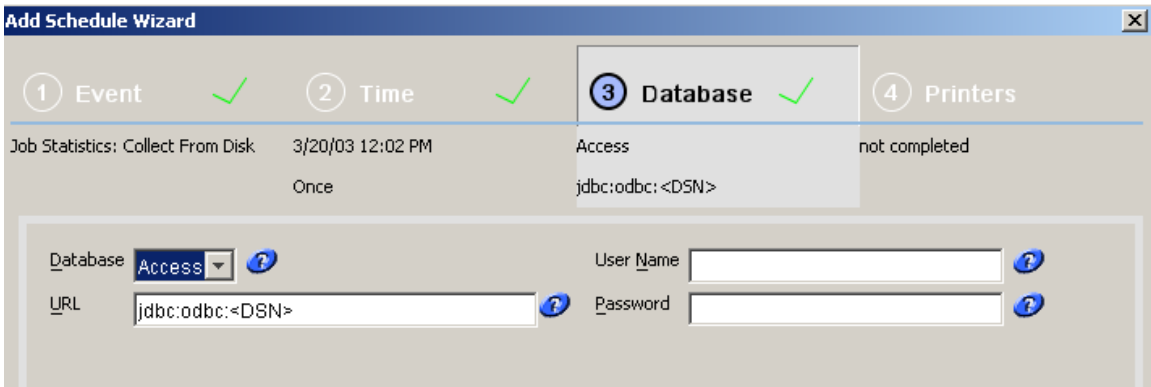
Select the "Add" button to add scheduled events for Job Statistics: Collect From Disk. The Add Schedule Wizard screen should be displayed:



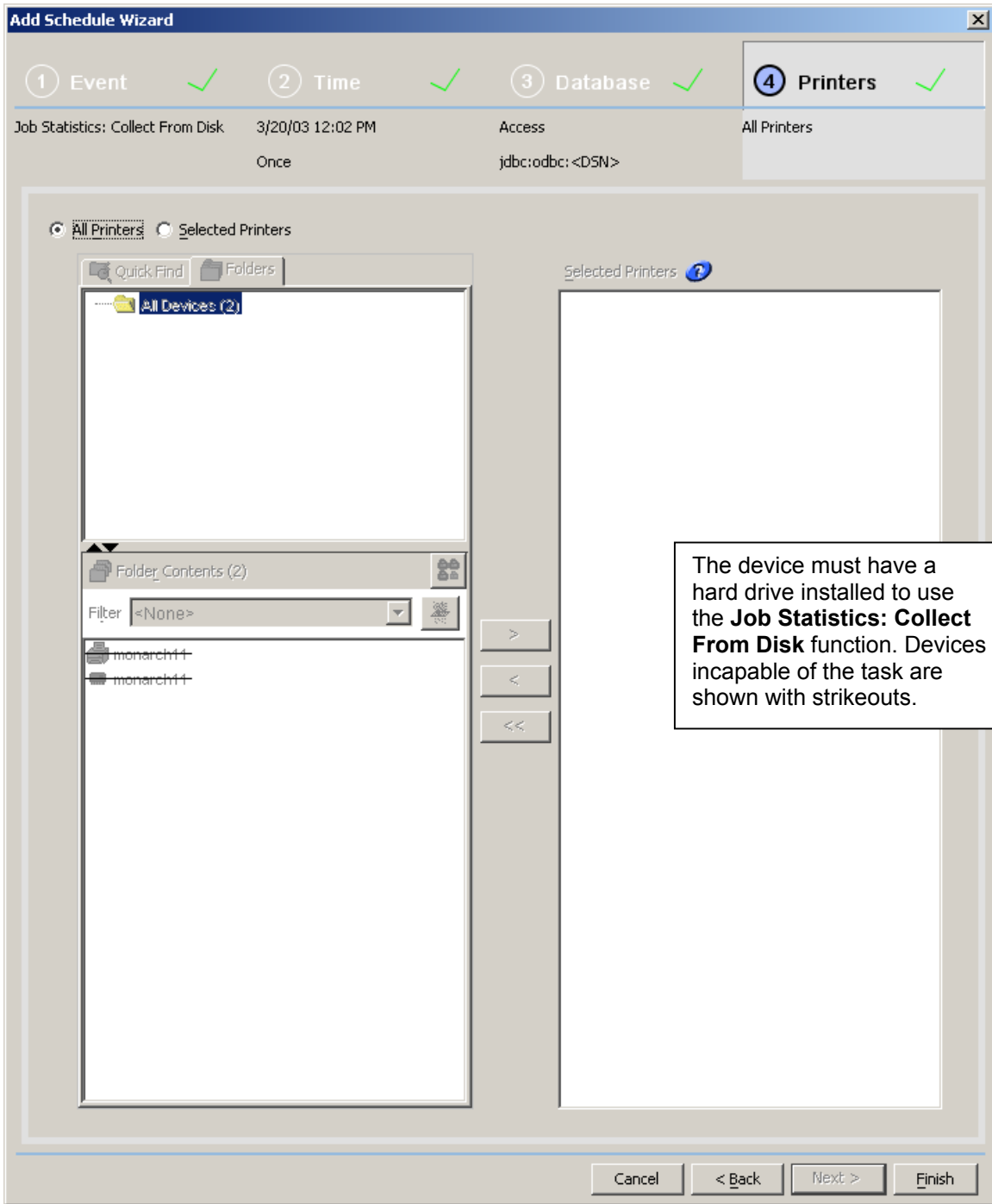
Select the **Job Statistics: Collect From Disk** radio button and click "Next." Step 2 of the Add Schedule Wizard should be displayed:



Modify the scheduling parameters as desired and click “Next.” Step 3 of the Add Schedule Wizard should be displayed:



Select the appropriate database. Follow database specific instructions in the [Configuring Database Driver](#) section. Select “Next” and step 4 of the Add Schedule Wizard should be displayed:



The **Selected Printers** list display any printers you have want the server to query for Job Accounting alerts at the specified date/time.

4.2 Table and Field Descriptions

The tables and descriptions of each field are listed below. The data types listed for each field listed are specific to Oracle databases. Please reference the [Data Type Conversion](#) section for converting to Microsoft Access or SQL Server data types.

4.2.1 RAWJAFAXJOB

This table contains records pertaining to sent and received fax operations.

| Field Name | Data Type | Supported MVP Release | Description |
|-------------------------------------------------------------------------------------------------------------------------------------------------------------------------------------------------------|---------------|-----------------------|--------------------------------------------------------------------------------------------------------|
| Note: All printers may not support some fields. For more specific information, please contact Lexmark Customer Support at http://support.lexmark.com. | | | |
| TIME_UTC | NUMBER(10) | MVP 7.1 | Time at which this job was detected by MarkVision, in seconds elapsed since 0:00:00, Jan 1, 1900, GMT. |
| DEVICE_ID | VARCHAR2(255) | MVP 7.1 | String identifier MarkVision uses to identify this device. |
| JOB_ID | NUMBER(5) | MVP 7.1 | Job id assigned by device. |
| VERSION | NUMBER(5) | MVP 7.1 | Version of the data format used in this table. |
| YEAR | NUMBER(4) | MVP 7.1 | Year in which this job was detected by MarkVision. |
| MONTH | NUMBER(2) | MVP 7.1 | Month in which this job was detected by MarkVision. |
| DAY | NUMBER(2) | MVP 7.1 | Day of the month on which this job was detected by MarkVision. |
| DAY_OF_WEEK | NUMBER(1) | MVP 7.1 | Day of week on which this job was detected by MarkVision. |
| HOURS | NUMBER(2) | MVP 7.1 | Hour of the day in which this job was detected by MarkVision. |
| MINUTES | NUMBER(2) | MVP 7.1 | Minute of the hour in which this job was detected by MarkVision. |
| SECONDS | NUMBER(2) | MVP 7.1 | Seconds of the minute in which this job was detected by MarkVision. |
| GMT_OFFSET_IN_SECONDS | NUMBER(5) | MVP 7.1 | Offset from GMT of the current time zone, in seconds. This is an integer from -43200 to 43200. |
| IS_USING_DST | VARCHAR2(1) | MVP 7.1 | Does the current time zone use Daylight Savings Time? Possible values = "Y" for true, "N" for false. |
| DST_OFFSET_IN_SECONDS | NUMBER(4) | MVP 7.1 | Offset from Standard Time of the current time zone, in seconds. |
| DATA_SOURCE | | MVP 7.1 | Where did this record come from? Possible |

| | | | |
|-------------------------|--------------|----------|----------------------------------------------------------------------------------------------------------------------------------------------------------------------------|
| | | | Values: 'Granite V.x.x, Alert' or 'Granite V.x.x, Disk' |
| RMIPORTNUMBER | NUMBER(10) | MVP 10.1 | Marvision Sever's RMI service Port Number |
| SERVER_IP_ADDRESS | VARCHAR2(20) | MVP 10.1 | IP Address of the host m/c on which Markvision server is running |
| SERIAL_NUMBER | VARCHAR2(32) | MVP 7.1 | Device serial number. |
| JOB_TYPE | VARCHAR2(32) | MVP 7.1 | Possible Values: Receive, Send From Scanner, Send From Driver |
| PRINTER_JOB_ID | NUMBER(5) | MVP 7.1 | For faxes with a transmission log, the job id of the log as it appears in RAWJAPRINTJOB. |
| JOB_DURATION_IN_SECONDS | NUMBER(10) | MVP 7.1 | The duration of the job. |
| IS_COLOR | VARCHAR2(1) | MVP 7.1 | Possible values = "Y" for true, "N" for false. |
| JOB_SIZE_IN_BYTES | NUMBER(10) | MVP 7.1 | The job size. |
| SHEET_COUNT | NUMBER(5) | MVP 7.1 | The sheet count. |
| ERROR_CODE | VARCHAR2(32) | MVP 7.1 | Possible Values: None, No Dial Tone, No Answer, Busy, Line Dropped, Error In T30 Protocol, Modem Error , Out Of Memory, Cancelled |
| ACCOUNT_NUMBER | VARCHAR2(32) | MVP 7.1 | Number of account that submitted this job. |
| PHONE_NUMBER | VARCHAR2(64) | MVP 7.1 | The station phone number. |
| REMOTE_STATION_ID | VARCHAR2(32) | MVP 7.1 | The remote station id. |
| LOCAL_STATION_ID | VARCHAR2(32) | MVP 7.1 | The local station id. |
| TRANSMISSION_SPEED | NUMBER(10) | MVP 7.1 | The job transmission speed. |
| REQUESTED_RESOLUTION | VARCHAR2(32) | MVP 7.1 | Possible Values: Standard, Fine, Superfine, Ultrafine |
| NEGOTIATED_RESOLUTION | VARCHAR2(32) | MVP 7.1 | Possible Values: Standard 204 x 98, Standard 200 x 100, Fine 204 x 196, Fine 200 x 200, Superfine 204 x 391, Superfine 300 x 300, Ultrafine 408 x 391, Ultrafine 408 x 400 |
| COMPRESSION | VARCHAR2(32) | MVP 7.1 | Possible Values: None, MH, MR, MMR, JPEG |
| IS_ECM | VARCHAR2(1) | MVP 7.1 | Possible values = "Y" for true, "N" for false. |
| NUMBER_OF_SPLIT_PAGES | NUMBER(5) | MVP 7.1 | The number of split pages. |

| | | | |
|-------------------|---------------|---------|---------------------------------|
| NUMBER_OF_RETRIES | NUMBER(3) | MVP 7.1 | The number of retries. |
| USER_NAME | VARCHAR2(255) | MVP 7.1 | Name of user who sent this fax. |

4.2.2 RAWJASCANJOB

This table contains records pertaining to submitted scans, such as account, destination, duration, resolution, etc.

| Field Name | Data Type | Supported MVP Release | Description |
|-------------------------------------------------------------------------------------------------------------------------------------------------------------------------------------------------------|---------------|-----------------------|--------------------------------------------------------------------------------------------------------|
| Note: All printers may not support some fields. For more specific information, please contact Lexmark Customer Support at http://support.lexmark.com. | | | |
| TIME_UTC | NUMBER(10) | MVP 7.1 | Time at which this job was detected by MarkVision, in seconds elapsed since 0:00:00, Jan 1, 1900, GMT. |
| DEVICE_ID | VARCHAR2(255) | MVP 7.1 | String identifier MarkVision uses to identify this device. |
| JOB_ID | NUMBER(5) | MVP 7.1 | Job id assigned by device. |
| VERSION | NUMBER(5) | MVP 7.1 | Version of the data format used in this table. |
| YEAR | NUMBER(4) | MVP 7.1 | Year in which this job was detected by MarkVision. |
| MONTH | NUMBER(2) | MVP 7.1 | Month in which this job was detected by MarkVision. |
| DAY | NUMBER(2) | MVP 7.1 | Day of the month on which this job was detected by MarkVision. |
| DAY_OF_WEEK | NUMBER(1) | MVP 7.1 | Day of week on which this job was detected by MarkVision. |
| HOURS | NUMBER(2) | MVP 7.1 | Hour of the day in which this job was detected by MarkVision. |
| MINUTES | NUMBER(2) | MVP 7.1 | Minute of the hour in which this job was detected by MarkVision. |
| SECONDS | NUMBER(2) | MVP 7.1 | Seconds of the minute in which this job was detected by MarkVision. |
| DST_OFFSET_IN_SECONDS | NUMBER(5) | MVP 7.1 | Offset from Standard Time of the current time zone, in seconds. |
| IS_USING_DST | VARCHAR2(1) | MVP 7.1 | Does the current time zone use Daylight Savings Time? Possible values = "Y" for true, "N" for false. |

| | | | |
|-------------------------|--------------|----------|---------------------------------------------------------------------------------------------------|
| GMT_OFFSET_IN_SECONDS | NUMBER(4) | MVP 7.1 | Offset from GMT of the current time zone, in seconds. This is an integer from -43200 to 43200. |
| DATA_SOURCE | VARCHAR2(32) | MVP 7.1 | Where did this record come from? Possible Values: 'Granite V.x.x, Alert' or 'Granite V.x.x, Disk' |
| RMIPORTNUMBER | NUMBER(10) | MVP 10.1 | Marvision Sever's RMI service Port Number |
| SERVER_IP_ADDRESS | VARCHAR2(20) | MVP 10.1 | IP Address of the host m/c on which Markvision server is running |
| SERIAL_NUMBER | VARCHAR2(32) | MVP 7.1 | Device serial number. |
| JOB_SIZE_IN_BYTES | NUMBER(10) | MVP 7.1 | The job size. |
| SHEET_COUNT | NUMBER(5) | MVP 7.1 | The sheet count. |
| JOB_DURATION_IN_SECONDS | NUMBER(10) | MVP 7.1 | The job duration. |
| ERROR_CODE | VARCHAR2(32) | MVP 7.1 | The error code. |
| ACCOUNT_NUMBER | VARCHAR2(32) | MVP 7.1 | Number of account that submitted this job. |
| FORMAT | VARCHAR2(32) | MVP 7.1 | Possible Values: PDF, JPEG, TIFF |
| COMPOSITION | VARCHAR2(32) | MVP 7.1 | Possible Values: 1 Bit, 3 Bit, 4 Bit, 8 Bit, 24 Bit, 32 Bit |
| DESTINATION_TYPE | VARCHAR2(32) | MVP 7.1 | Possible Values: Email Attachment, Email With URL Link, FTP, TCP |
| RESOLUTION_DPI | NUMBER(5) | MVP 7.1 | The resolution. |
| ORIGINAL_SIZE | VARCHAR2(32) | MVP 7.1 | The document's original size e.g. Letter, Tabloid, Legal, Executive, A2, etc. |
| IS_COLOR | VARCHAR2(1) | MVP 7.1 | Possible values = "Y" for true, "N" for false. |
| USER_NAME | VARCHAR2(55) | MVP 7.1 | Name of user performing this scan. |

4.2.3 RAWJAPRINTJOB

This table contains records pertaining to submitted print jobs, including when submitted, by whom, size, and failures encountered with the submitted print job.

| Field Name | Data Type | Supported MVP Release | Description |
|-------------------------------------------------------------------------------------------------------------------------------------------------------------------------------------------------------|------------|-----------------------|-----------------------------------------------------------------------|
| Note: All printers may not support some fields. For more specific information, please contact Lexmark Customer Support at http://support.lexmark.com. | | | |
| TIME_UTC | NUMBER(10) | MVP 7.1 | Time at which this job was detected by MarkVision, in seconds elapsed |

| | | | |
|-----------------------|---------------|---------|------------------------------------------------------------------------------------------------------|
| | | | since 0:00:00, Jan 1, 1900, GMT. |
| DEVICE_ID | VARCHAR2(255) | MVP 7.1 | String identifier MarkVision uses to identify this device. |
| JOB_ID | NUMBER(5) | MVP 7.1 | Job id assigned by device. |
| VERSION | NUMBER(5) | MVP 7.1 | Version of the data format used in this table. |
| YEAR | NUMBER(4) | MVP 7.1 | Year in which this job was detected by MarkVision. |
| MONTH | NUMBER(2) | MVP 7.1 | Month in which this job was detected by MarkVision. |
| DAY | NUMBER(2) | MVP 7.1 | Day of the month on which this job was detected by MarkVision. |
| DAY_OF_WEEK | NUMBER(1) | MVP 7.1 | Day of week on which this job was detected by MarkVision. |
| HOURS | NUMBER(2) | MVP 7.1 | Hour of the day in which this job was detected by MarkVision. |
| MINUTES | NUMBER(2) | MVP 7.1 | Minute of the hour in which this job was detected by MarkVision. |
| SECONDS | NUMBER(2) | MVP 7.1 | Seconds of the minute in which this job was detected by MarkVision. |
| GMT_OFFSET_IN_SECONDS | NUMBER(5) | MVP 7.1 | Offset from GMT of the current time zone, in seconds. This is an integer from -43200 to 43200. |
| IS_USING_DST | VARCHAR2(1) | MVP 7.1 | Does the current time zone use Daylight Savings Time? Possible values = "Y" for true, "N" for false. |
| DST_OFFSET_IN_SECONDS | NUMBER(4) | MVP 7.1 | Offset from Standard Time of the current time zone, in seconds. |

| | | | |
|----------------------------|--------------|----------|-----------------------------------------------------------------------------------------------------------------------------------------------------------------------------------------------------------------------------------------------|
| | | | Where did this record come from? Possible Values: 'Granite V.x.x, Alert' or 'Granite V.x.x, Disk' |
| DATA_SOURCE | VARCHAR2(32) | MVP 7.1 | |
| RMIPORTNUMBER | NUMBER(10) | MVP 10.1 | Marvision Sever's RMI service Port Number |
| SERVER_IP_ADDRESS | VARCHAR2(20) | MVP 10.1 | IP Address of the host m/c on which Markvision server is running |
| SERIAL_NUMBER | VARCHAR2(32) | MVP 7.1 | Device serial number. |
| JOB_DURATION_IN_SECONDS | NUMBER(10) | MVP 7.1 | The duration of the job. |
| | | | Possible Values: Fax[n] 4 >= n >= 1, IR[n] 4 >= n >= 1, Internal[n] 3 >= n >= 1, LocalTalk[n] 4 >= n >= 1, Network[n] 6 >= n >= 1, Parallel[n] 4 >= n >= 1, Serial[n] 4 >= n >= 1, USB[n] 4 >= n >= 1, NetworkStd |
| PORT_NAME | VARCHAR2(32) | MVP 7.1 | |
| JOB_SIZE_IN_BYTES | NUMBER(10) | MVP 7.1 | The size of the job. |
| | | | Possible Values: Any string, PCL 5 Emulation, PCL XL Emulation, PCL 3 Emulation, PostScript Emulation, IPDS Emulation, GL 1 Emulation, PPDS, PJI, HTML, WinImage, LexGear, NPAP, SCS/Telnet, Automatic Language switching, Download Emulation |
| INTERPRETER_NAME | VARCHAR2(32) | MVP 7.1 | |
| TONER_TALLY_VERSION | NUMBER(3) | MVP 7.1 | The toner tally version. |
| OUTPUT_OVERFLOW_BIN_NUMBER | NUMBER(3) | MVP 7.1 | The output overflow bin number. |
| | | | Bit encoded: 0, overflow occurred in job; 1, overflowing at end of job; 2-7, reserved. |
| OUTPUT_BIN_OVERFLOW | NUMBER(3) | MVP 7.1 | |
| | | | Bit encoded: 0, standard bin; 1, bin 1; 8, bin 8. |
| OUTPUT_BINS_USED | NUMBER(5) | MVP 7.1 | |

| | | | |
|-------------------------|---------------|----------|----------------------------------------------------------------------------------------------------------------------------------------------------------------------------------------------------------------------------------------------------------------|
| N_UPNESS | NUMBER(5) | MVP 7.1 | 0 = 1-up, 2-255 = 2-up through 255-up, 256 = user defined. |
| STAPLE_FAILURES | NUMBER(5) | MVP 7.1 | Bit encoded: 0, set if stapling attempted; 1, out of staples; 2, attempt to staple a 1 page job; 3, attempt to staple too many pages; 4, printer canceled the staple operation; 5, output bin change during stapled set; 6, paper jam; 7, staple jam; 8, other |
| PQS_HELD_JOB | NUMBER(10) | MVP 7.1 | The PQS held job. Possible values = "1" for true, "0" for false. |
| LIFETIME_PAGE_COUNT | NUMBER(10) | MVP 7.1 | Lifetime page count of this device at the time of this job. |
| DESTINATION_TYPE | NUMBER(3) | MVP 7.1 | The destination type. |
| JOB_NAME | VARCHAR2(150) | MVP 7.1 | Name associated with this job. |
| HOST_NAME | VARCHAR2(55) | MVP 7.1 | The name of the host machine. |
| USER_NAME | VARCHAR2(55) | MVP 7.1 | Name of user submitting this job. |
| QUEUE_NAME | VARCHAR2(55) | MVP 7.1 | The print queue name. |
| SOURCE_PROTOCOL | VARCHAR2(25) | MVP 7.1 | The job source protocol. |
| ACCOUNT_NUMBER | VARCHAR2(55) | MVP 7.1 | Number of account that submitted this job. |
| OTHER_USER_DEFINED_DATA | VARCHAR2(55) | MVP 7.1 | Other job data. |
| DATA_READY | VARCHAR2(1) | MVP 7.1 | Have all of this table's children also been populated? Possible values = "Y" for true, "N" for false. |
| JOB_STATUS | VARCHAR2(15) | MVP 10.0 | Status of the Job; Possible values: "OK", "DELETED", "CANCELLED", "ERROR" |
| TONER_DARKNESS_VALUE | NUMBER(10) | MVP 10.0 | Toner Darkness Level |

| | | | |
|----------------------|--------------|------------|-------------------------------------------------------------------------------------------------------------------------------------------------------------------------------------------------------------------------------------------------------------------------------------------------------------------------|
| PRINT_DARKNESS_VALUE | NUMBER(10) | MVP 10.0 | Printing Darkness Level |
| TONER_DARKNESS_STR | VARCHAR2(50) | MVP 10.0 | Toner Darkness String |
| TONER_SAVER | VARCHAR2(10) | MVP 10.0 | Toner Saver Value Possible values "Off", "On" |
| STAPLE_STATUS | VARCHAR2(50) | MVP 10.0 | Indicates status of stapling Job. Possible values "None", "Stapling Attempted", "Out Of Staples", "Staple On Page Failure", "Staple Too Many Pages Failure", "Printer Sent Command To Flush", "Output Bin Changed Failure", "Paper Jam Failure", "Staple Jam failure", "Other Failure" |
| PUNCHED | VARCHAR2(1) | MVP 10.0 | Indicates punching status "Y" or "N". Field may not exist if punching not supported on the machine |
| JOGGED | VARCHAR2(1) | MVP 10.0 | Indicates jogging status "Y" or "N". Field may not exist if punching not supported on the machine |
| PH_USER_NAME | VARCHAR2(64) | MVP 10.0.1 | 'Print and Hold' user name. |
| DELETE_REASON | VARCHAR2(64) | MVP 10.0.1 | Possible Values: Completed, Cancelled, Reset, Deleted, Insufficient Memory, Insufficient Memory (Job Structures), Limit, Duplicate Job Entry. |

4.2.4 RAWJAPRINTJOBINPUT

This table contains records pertaining to the type of media physically input to and used by the submitted job on a device.

| Field Name | Data Type | Supported MVP Release | Description |
|-------------------------------------------------------------------------------------------------------------------------------------------------------------------------------------------------------|---------------|-----------------------|------------------------------------------------------------------------------------------------------------------------------------------|
| Note: All printers may not support some fields. For more specific information, please contact Lexmark Customer Support at http://support.lexmark.com. | | | |
| TIME_UTC | NUMBER(10) | MVP 7.1 | Time at which this job was detected by MarkVision, in seconds elapsed since 0:00:00, Jan 1, 1900, GMT. |
| DEVICE_ID | VARCHAR2(255) | MVP 7.1 | String identifier MarkVision uses to identify this device. |
| JOB_ID | NUMBER(5) | MVP 7.1 | Job id assigned by device. |
| VERSION | NUMBER(5) | MVP 7.1 | Version of the data format used in this table. |
| NAME | VARCHAR2(64) | MVP 7.1 | Possible Values: Envelope Feeder, Feeder 2, Manual Envelope Feeder, Manual Paper Feeder, Multipurpose Feeder, Tray [n] where 5 >= n >= 1 |
| SHEET_COUNT | NUMBER (10) | MVP 7.1 | Number of physical sheets ejected from device. |
| IMPRESSION_COUNT | NUMBER (10) | MVP 7.1 | Number of impressions made on each sheet. |
| COLOR_SHEET_COUNT | NUMBER (10) | MVP 7.1 | Number of physical color sheets ejected from device. |
| COLOR_IMPRESSION_COUNT | NUMBER(10) | MVP 7.1 | Number of color impressions made on each sheet. |

4.2.5 RAWJAPRINTJOBSUPPLY

This table contains records pertaining to the printing supplies, such as type of toner and amount used, and the resolution of the jobs submitted.

| Field Name | Data Type | Supported MVP Release | Description |
|-------------------------------------------------------------------------------------------------------------------------------------------------------------------------------------------------------|------------|-----------------------|--------------------------------------------------------------------------------------------------------|
| Note: All printers may not support some fields. For more specific information, please contact Lexmark Customer Support at http://support.lexmark.com. | | | |
| TIME_UTC | NUMBER(10) | MVP 7.1 | Time at which this job was detected by MarkVision, in seconds elapsed since 0:00:00, Jan 1, 1900, GMT. |

| | | | |
|---------------------|---------------|---------|--------------------------------------------------------------------------------------------------------------------------------------------|
| DEVICE_ID | VARCHAR2(255) | MVP 7.1 | String identifier MarkVision uses to identify this device. |
| JOB_ID | NUMBER(5) | MVP 7.1 | Job id assigned by device. |
| VERSION | NUMBER(5) | MVP 7.1 | Version of the data format used in this table. |
| NAME | VARCHAR2(64) | MVP 7.1 | Name of the supply e.g. Black Image Drum, Black Ink - Photo Cartridge, Black Ink, Black Toner, etc. |
| TONER_COUNT | NUMBER(10) | MVP 7.1 | The toner count. Indicates how much toner was used per job. Higher numbers indicate more toner was used. |
| NUMBER_OF_LEVELS | NUMBER(10) | MVP 7.1 | The number of levels. Used by MarkVision Professional to calculate the percentage full. |
| MAX_CAPACITY | NUMBER(10) | MVP 7.1 | The maximum capacity of the supply. |
| CURRENT_LEVEL | NUMBER(10) | MVP 7.1 | The current level. Used by MarkVision Professional to calculate the percentage full. |
| CURRENT_PRINT_LEVEL | NUMBER(10) | MVP 7.1 | The current print level. Less accurate method of calculating supply percentage. Possible values are 0-7 (0 meaning empty; 7 meaning full). |

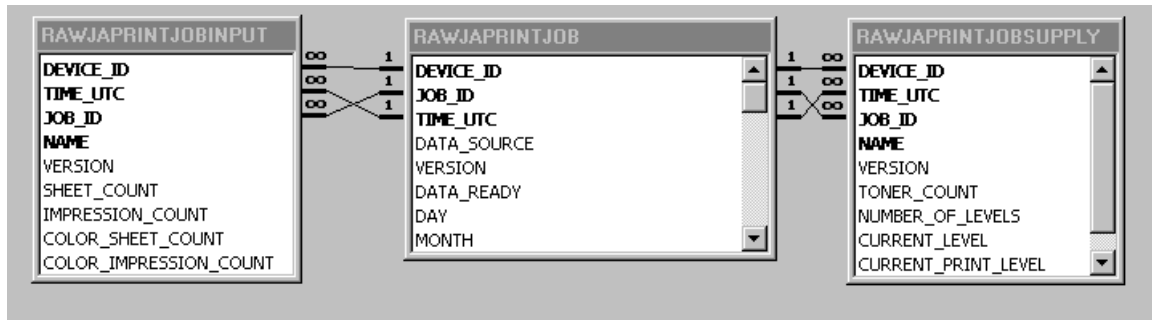
4.2.6 RAWJAPRINTJOBPAPER

This table contains records pertaining to the printing Papers, such as type of Paper and Printing counts etc.

| Field Name | Data Type | Supported MVP Release | Description |
|-------------------------------------------------------------------------------------------------------------------------------------------------------------------------------------------------------|---------------|-----------------------|--------------------------------------------------------------------------------------------------------|
| Note: All printers may not support some fields. For more specific information, please contact Lexmark Customer Support at http://support.lexmark.com. | | | |
| TIME_UTC | NUMBER(10) | MVP 10.0 | Time at which this job was detected by MarkVision, in seconds elapsed since 0:00:00, Jan 1, 1900, GMT. |
| DEVICE_ID | VARCHAR2(255) | MVP 10.0 | String identifier MarkVision uses to identify this device. |
| JOB_ID | NUMBER(5) | MVP 10.0 | Job id assigned by device. |

| | | | |
|------------------------|--------------|----------|--------------------------------------------------------------------------------------------------------------------------------------------------------------------------------------------------------------------------------------------------------------------------------------------------------------------------------------------------------|
| VERSION | NUMBER(5) | MVP 10.0 | Version of the data format used in this table. |
| PAPER_TYPE | VARCHAR2(64) | MVP 10.0 | Indicates the type of Paper. Possible values : "Plain Paper", "Colored Paper", "Transparency", "Card Stock", "Labels", "Letterhead", "Preprinted", "Bond", "Envelope", "Coated Paper", "Glossy Paper", "Iron On", "Photo Paper", "Greeting Card", "Custom Type 1", "Custom Type 2", "Custom Type 3", "Custom Type 4", "Custom Type 5", "Custom Type 6" |
| SHEET_COUNT | NUMBER (10) | MVP 10.0 | Number of physical sheets ejected from device. |
| IMPRESSION_COUNT | NUMBER (10) | MVP 10.0 | Number of impressions made on each sheet. |
| COLOR_IMPRESSION_COUNT | NUMBER(10) | MVP 10.0 | Number of color impressions made on each sheet. |

4.3 Field Relationships



5. Device Status

MarkVision Professional allows you to collect device status information for a particular printer or group of printers. With the collected data you can create reports, perform trend analysis, etc. See [Configuring Database Driver](#) for a description of supported databases.

5.1 Configuring MarkVision Professional

Device Status collection is configurable in the **Job Statistics (Trend Analysis)** task. For more information on this task, see the [Job Statistics \(Trend Analysis\)](#) section.

5.2 Table and Field Descriptions

The tables and descriptions of each field are listed below. The data types listed for each field listed are specific to Oracle databases. Please reference the [Data Type Conversion](#) section for converting to Microsoft Access or SQL Server data types.

5.2.1 RAWDEVICESTATUS

This table contains records of status messages and alerts, along with the times they occurred. Only the oldest and most significant status condition is populated in this table. Reference the [RAWDSDEVICESTATUS](#) table for a complete description of all status conditions.

| Field Name | Data Type | Supported MVP Release | Description |
|-------------------------------------------------------------------------------------------------------------------------------------------------------------------------------------------------------|---------------|-----------------------|--------------------------------------------------------------------------------------------------------|
| Note: All printers may not support some fields. For more specific information, please contact Lexmark Customer Support at http://support.lexmark.com. | | | |
| TIME_UTC | NUMBER(10) | MVP 7.1 | Time at which this job was detected by MarkVision, in seconds elapsed since 0:00:00, Jan 1, 1900, GMT. |
| DEVICE_ID | VARCHAR2(255) | MVP 7.1 | String identifier MarkVision uses to identify this device. |
| VERSION | NUMBER(5) | MVP 7.1 | Version of the data format used in this table. |
| YEAR | NUMBER(4) | MVP 7.1 | Year in which this job was detected by MarkVision. |
| MONTH | NUMBER(2) | MVP 7.1 | Month in which this job was detected by MarkVision. |
| DAY | NUMBER(2) | MVP 7.1 | Day of the month on which this job was detected by MarkVision. |
| DAY_OF_WEEK | NUMBER(1) | MVP 7.1 | Day of week on which this job was detected by MarkVision. |
| HOURS | NUMBER(2) | MVP 7.1 | Hour of the day in which this job was detected by MarkVision. |
| MINUTES | NUMBER(2) | MVP 7.1 | Minute of the hour in which this job was detected by MarkVision. |

| | | | |
|-----------------------|---------------|----------|------------------------------------------------------------------------------------------------------|
| SECONDS | NUMBER(2) | MVP 7.1 | Seconds of the minute in which this job was detected by MarkVision. |
| GMT_OFFSET_IN_SECONDS | NUMBER(5) | MVP 7.1 | Offset from GMT of the current time zone, in seconds. This is an integer from -43200 to 43200. |
| IS_USING_DST | VARCHAR2(1) | MVP 7.1 | Does the current time zone use Daylight Savings Time? Possible values = "Y" for true, "N" for false. |
| DST_OFFSET_IN_SECONDS | NUMBER(4) | MVP 7.1 | Offset from Standard Time of the current time zone, in seconds. |
| DATA_SOURCE | VARCHAR2(32) | MVP 7.1 | Where did this record come from? Possible Values: 'Granite V.x.x, Alert'. |
| RMIPORTNUMBER | NUMBER(10) | MVP 10.1 | Marvision Sever's RMI service Port Number |
| SERVER_IP_ADDRESS | VARCHAR2(20) | MVP 10.1 | IP Address of the host m/c on which Markvision server is running |
| MESSAGE_ID | VARCHAR2(255) | MVP 7.1 | The description of the alert. |
| LOCATION_ID | VARCHAR2(255) | MVP 7.1 | The location of the device status alert. |
| SEVERITY | VARCHAR2(32) | MVP 7.1 | The severity of the alert. |

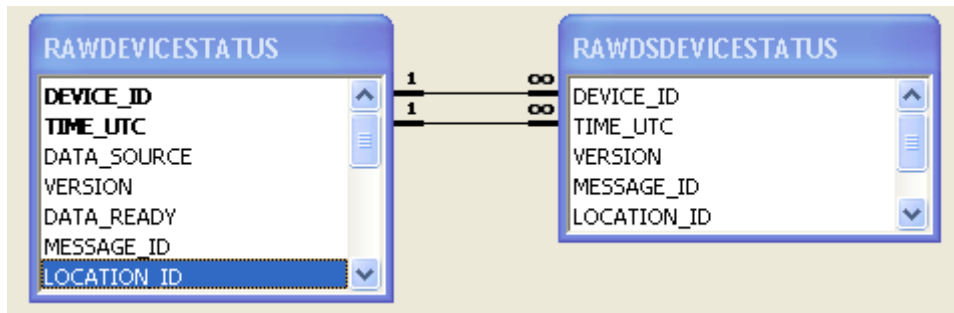
5.2.2 RAWDSDEVICESTATUS

This table contains a complete record of status messages and alerts, along with the times they occurred.

| Field Name | Data Type | Supported MVP Release | Description |
|-------------------------------------------------------------------------------------------------------------------------------------------------------------------------------------------------------|---------------|-----------------------|-----------------------------------------------------------------------------------------------------------------|
| Note: All printers may not support some fields. For more specific information, please contact Lexmark Customer Support at http://support.lexmark.com. | | | |
| TIME.UTC | NUMBER(10) | MVP 10.0.1 | Time at which this status alert was detected by MarkVision, in seconds elapsed since 0:00:00, Jan 1, 1900, GMT. |
| DEVICE_ID | VARCHAR2(255) | MVP 10.0.1 | String identifier MarkVision uses to identify this device. |
| VERSION | NUMBER(5) | MVP 10.0.1 | Version of the data format used in this table. |
| MESSAGE_ID | VARCHAR2(255) | MVP 10.0.1 | The description of the alert. |
| LOCATION_ID | VARCHAR2(255) | MVP 10.0.1 | The location of the device status alert. |

| | | | |
|--------------|--------------|------------|-------------------------------------------------------------------------------------------------------------------------|
| SEVERITY | VARCHAR2(32) | MVP 10.0.1 | The severity of the alert. |
| GRAPHIC_ID | NUMBER(5) | MVP 10.0.1 | The graphic identifier used to display the alert condition. |
| DISPLAY_TEXT | VARCHAR2(64) | MVP 10.1 | The actual text displayed on the printer's op-panel. NOTE: This information is not available on every printer model. |

5.3 Field Relationships



6. Data Type Conversion

Data types are listed specific to Oracle databases. When writing to Microsoft Access or SQL Server databases, the data types are converted according to the following tables:

| Oracle | Microsoft Access |
|-------------|------------------|
| NUMBER (1) | BYTE |
| NUMBER (2) | BYTE |
| NUMBER (3) | BYTE |
| NUMBER (4) | SHORT |
| NUMBER (5) | LONG |
| NUMBER (6) | LONG |
| NUMBER (7) | LONG |
| NUMBER (8) | LONG |
| NUMBER (9) | LONG |
| NUMBER (10) | DOUBLE |
| VARCHAR2(X) | VARCHAR(X) |

| Oracle | Microsoft SQL Server |
|---------------|-----------------------------|
| NUMBER(x) | NUMERIC(x) |
| VARCHAR2(x) | VARCHAR(x) |